



Availability and Pricing.

ALMA
ANDERMATT



Overview.

Residence	Floor	Bedrooms	Size	Balcony	Availability	Price*
ONE	Garden	2	122 m ²	20 m ² garden	Available	CHF 1,625,000
TWO	Ground	3	153 m ²	10 m ²	Available	CHF 1,900,000
THREE	First	3	136 m ²	9 m ²	Available	CHF 1,975,000
FOUR	First	3	134 m ²	9 m ²	Reserved	
FIVE	Second	3	136 m ²	9 m ²	Available	CHF 2,125,000
SIX	Second	3	134 m ²	9 m ²	Available	CHF 2,125,000
SEVEN	Third	3	136 m ²	9 m ²	Available	CHF 2,275,000
EIGHT	Third	3	134 m ²	9 m ²	Reserved	
NINE	Fourth	3	136 m ²	9 m ²	Reserved	
TEN	Fourth	3	134 m ²	9 m ²	Reserved	
PENTHOUSE	Fifth	3	169 m ²	19 m ²	Sold	

*A private cellar is included in apartment purchase prices.

Optional Costs

FF&E

- Residence One: CHF 85,000
- Residence Two to Ten: CHF 95,000
- Penthouse: CHF 120,000

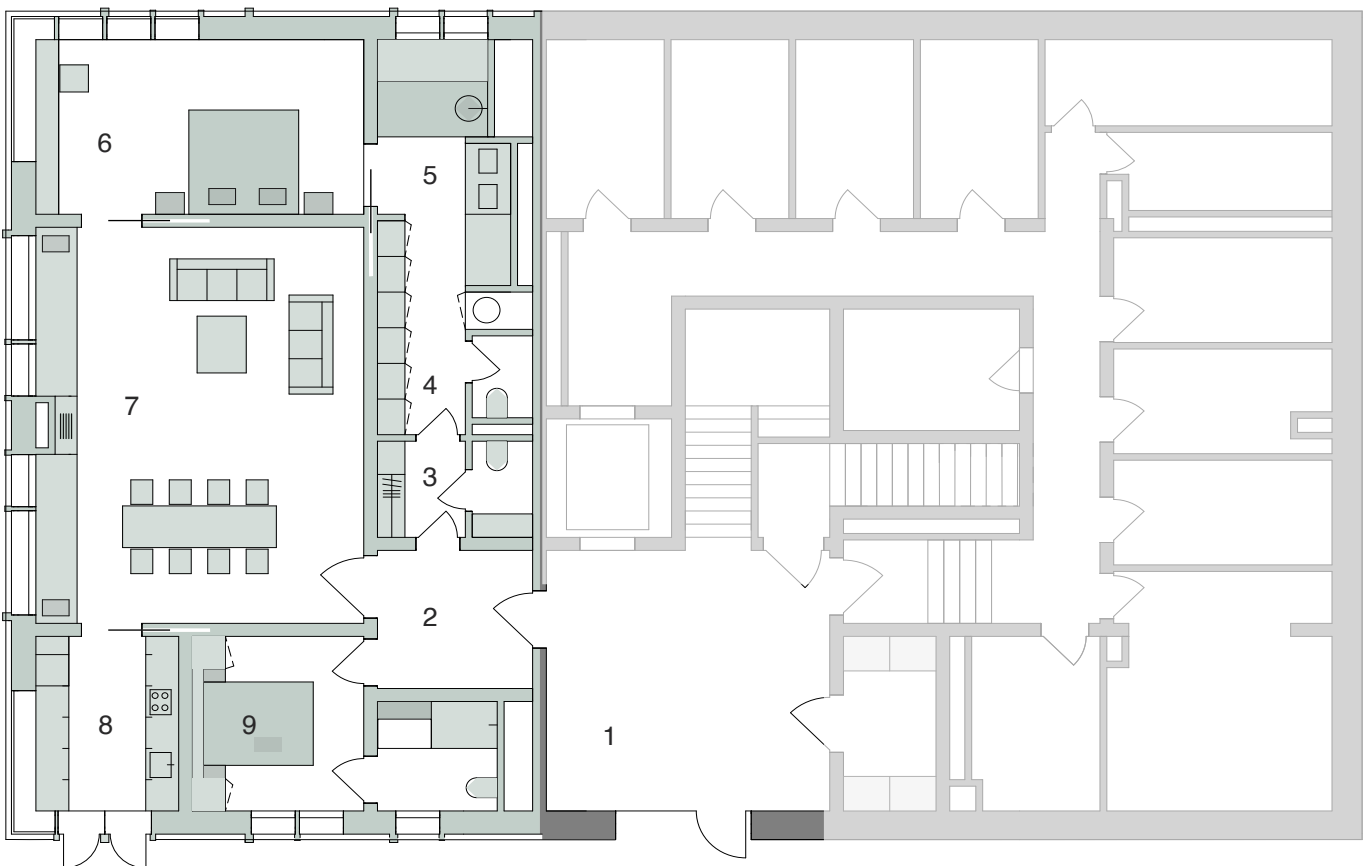
Parking

Parking rights: CHF 40,000

Garden Floor.

Residence One:

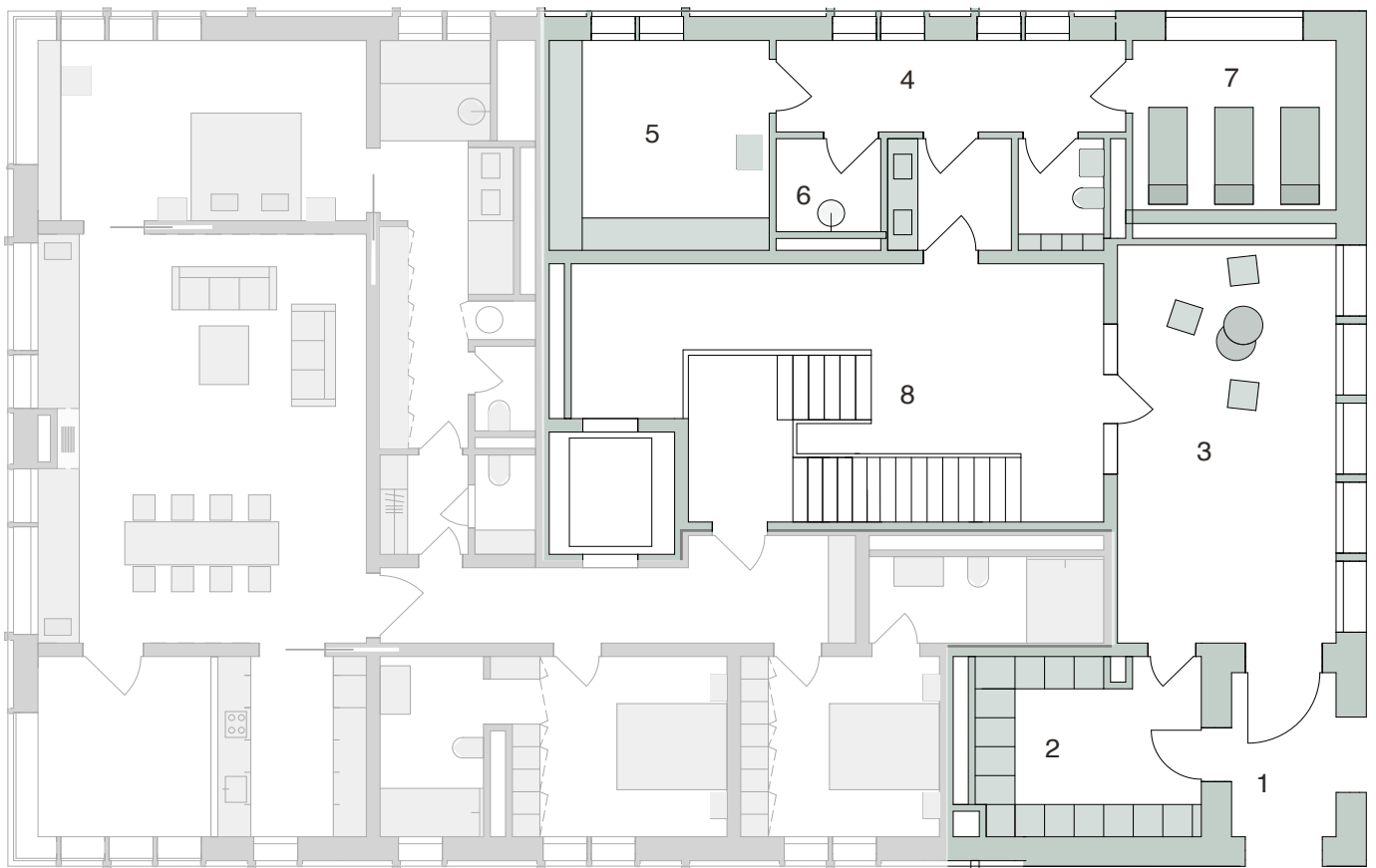
- 1 **Alma River Entrance** – Second entrance with direct access from the river and gardens.
- 2 **Entry Hall** – Garden apartment entry.
- 3 **Guest Cloakroom** – With bathroom and laundry cupboard.
- 4 **Master Dressing Room** – With dual access.
- 5 **Master Bathroom** – With an enclosed bathroom and shower and tub wet room.
- 6 **Master Bedroom** – With panoramic corner windows.
- 7 **Living & Dining Area** – Spacious with central stone fireplace and direct access to garden and river.
- 8 **Kitchen** – With expansive threshold into dining area and added sliding door for privacy.
- 9 **Bedroom** – With built-in wardrobe and en-suite bathroom.



Ground Floor.

Communal Areas & Facilities:

- 1 **Alma Village Entrance** – Protected entrance providing access from the village.
- 2 **Ski Room** – Double width lockers with ample seating.
- 3 **Lounge Lobby** – Beautifully furnished common living room lounge.
- 4 **Spa and Wellness Area** – Tranquil naturally lit space with personal locker and showers.
- 5 **Finnish Sauna** – Spacious dry sauna with showcase clerestory windows.
- 6 **Bio Sauna** – Intimate humid sauna.
- 7 **Relaxation Lounge** – Sumptuous lounging area with picture window.
- 8 **Stairwell** – With lift, connecting apartment with carpark and storage rooms.



Ground Floor.

Residence Two:

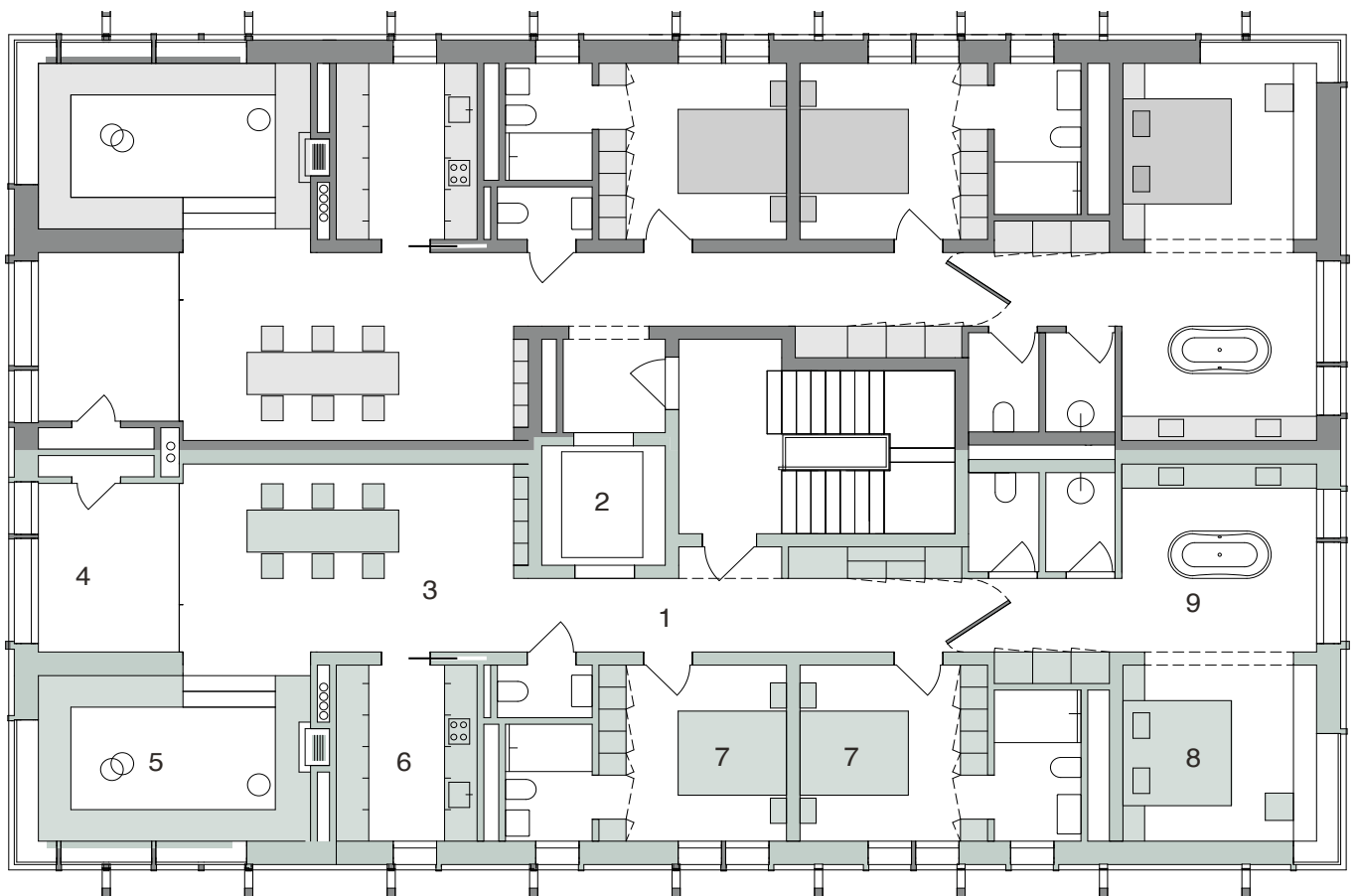
- 1 **Entry Hall** – With coat storage.
- 2 **Guest Cloakroom** – With bathroom and laundry cupboard.
- 3 **Master Dressing Room** – With dual access.
- 4 **Master Bathroom** – With an enclosed bathroom and shower and tub wet room.
- 5 **Master Bedroom** – With panoramic corner windows.
- 6 **Living & Dining Area** – Spacious with central stone fireplace.
- 7 **Protected Balcony** – Generous alfresco space with views over the river Reuss.
- 8 **Kitchen** – With expansive threshold into dining area and added sliding door for privacy.
- 9 **Bedroom** – With spacious built-in wardrobes and en-suite bathroom.


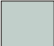


Floors One to Four.

Residences Three to Ten:

- 1 **Entry Hall** – With coat storage and guest bathroom.
- 2 **Lift** – With direct access to apartment.
- 3 **Dining Area** – Central position connecting to lounge and kitchen.
- 4 **Protected Balcony** – Generous alfresco space with views over the river Reuss.
- 5 **Sunken Lounge** – With panoramic views of the Bözberg mountain and the river Reuss.
- 6 **Kitchen** – With expansive threshold into dining area and added sliding door for privacy.
- 7 **Bedroom** – With spacious built-in wardrobes and en-suite bathroom.
- 8 **Master Bedroom** – Timber lined with generous corner views.
- 9 **Master Bathroom** – With freestanding tub and picture window.



-  Residences Three, Five, Seven and Nine.
-  Residences Four, Six, Eight and Ten.

Fifth Floor.

Penthouse:

- 1 **Penthouse Entrance** – With cloakroom and guest bathroom.
- 2 **Lift** – With direct access to the apartment.
- 3 **Kitchen** – With expansive threshold into dining area and added sliding door for privacy.
- 4 **Living & Dining Area** – With vaulted ceiling and central stone fireplace.
- 5 **Protected Balcony** – With panoramic views over the river Reuss.
- 6 **Master Bedroom** – Timber lined with spacious built-in wardrobes and en-suite bathroom.
- 7 **Bedroom** – With vaulted ceiling, spacious built-in wardrobes and en-suite bathroom.
- 8 **Laundry Room** – Equipped with additional storage areas.
- 9 **Guest Cloakroom** – With bathroom.

