

SOUTH AFRICA'S MOST
INNOVATIVE REAL ESTATE BRAND



REALTOR
OF EXCELLENCE

LUXURY PROPERTY



NETTLETON ROAD, CLIFTON

ULTIMATE LUXURY WITH CAPE TOWNS MOST ICONIC PENTAGON

R160,000,000

8,974,008.12 € | 8,803,494.29 CHF | 8,769,030.72 \$

FLOOR SIZE: 940M²

This property is one of the finest luxury homes in Cape Town on the most exclusive and sought after road in South Africa. Designed by Stefan Antoni and Greg Truen of award winning architectural firm, SAOTA. The home is built over 4 double volume levels and consists of 5 spacious bedrooms, each with their own en-suite bathroom (fitted with a bath and shower) and front facing balconies. The property features 5 bedrooms (all en-suite), spread over 5 levels (each accessible by a private glass elevator). A world class kitchen designed by Assirelli, which is fitted with integrated Miele appliances and black granite countertops. Multiple open-plan living and dining areas that flow out onto an expansive outside entertainment area with a large infinity pool and unobstructed views of the ocean.

 5 bedroom

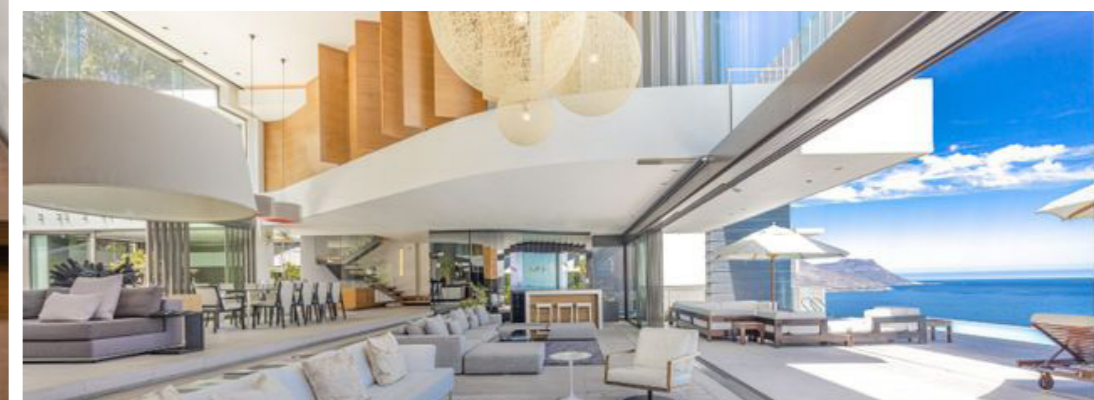
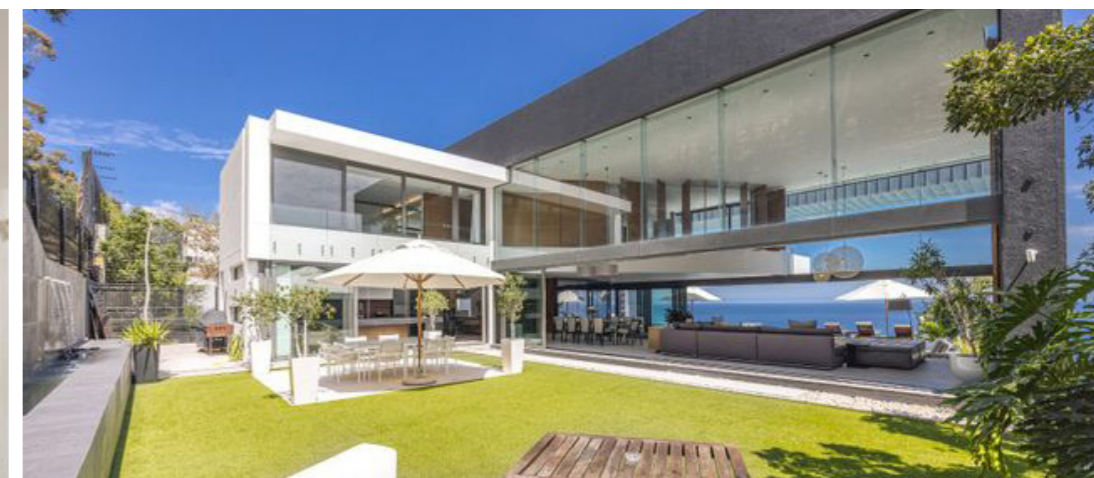
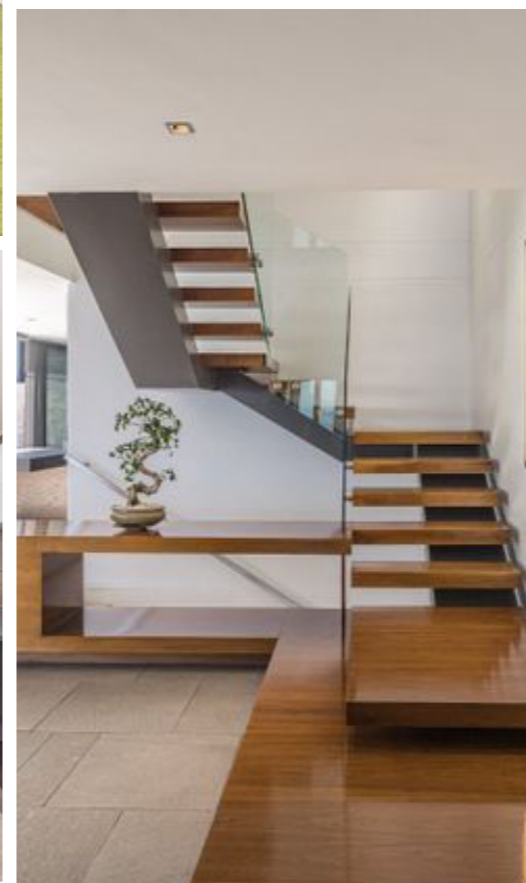
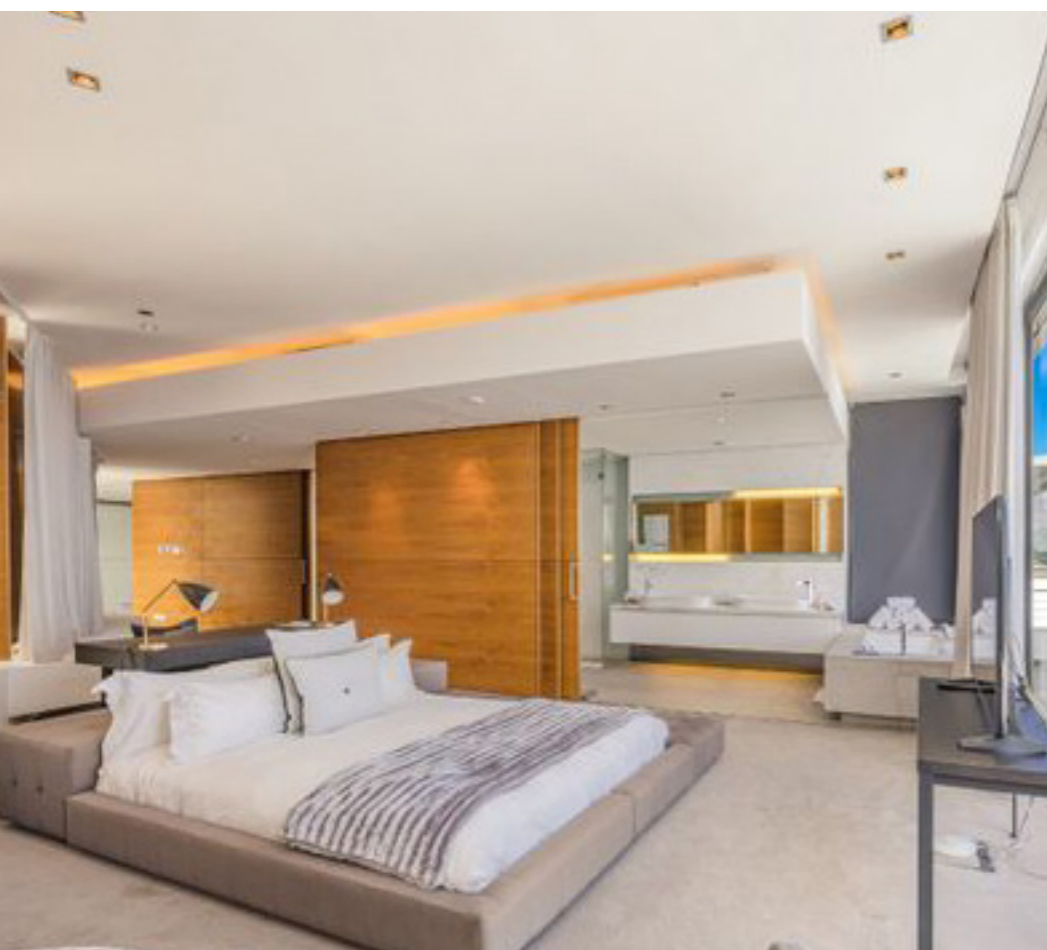
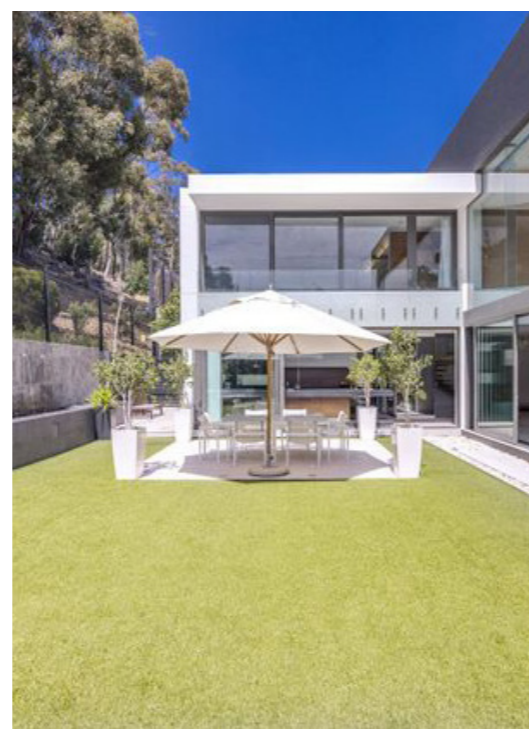
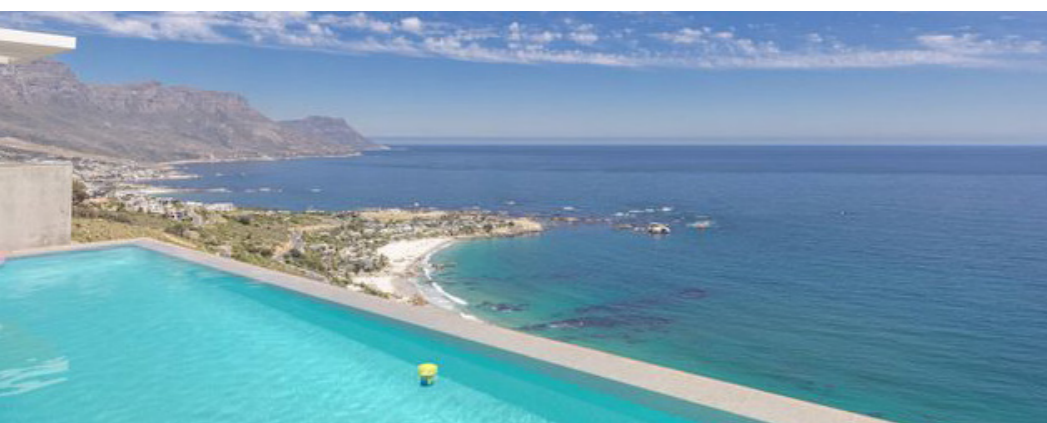
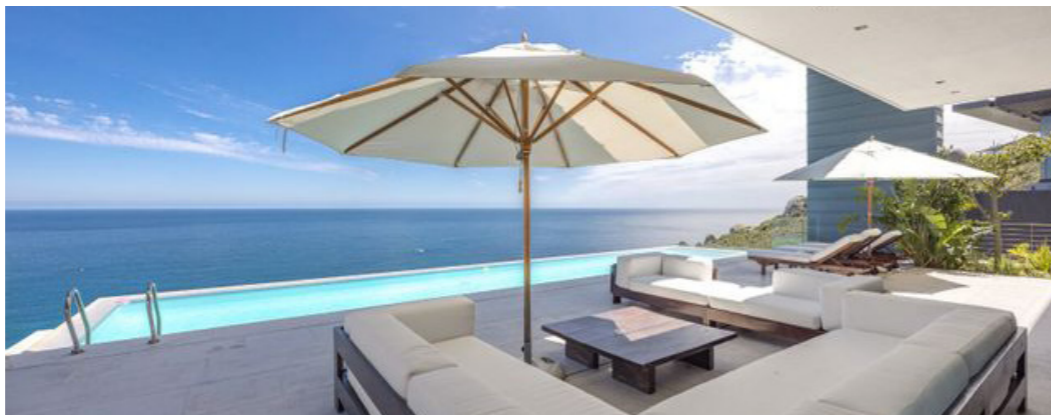
 6.5 bathrooms

PROPERTY FEATURES

- 8 seater private cinema
- Fully kitted with a home automation system and 80KvA generator that powers the entire home

- 2 bedroom staff accommodation and security room
- 4 car garage and ample off-street parking
- An airconditioned studio gym

The Pentagon is run as Cape Town's most popular and requested rental villa which generates substantial rental income.



Contact us to arrange a viewing of this magnificent property.



VAUGHN ERASMUS

072 234 9778

vaughn@realgroup.co.za



CONNOR NEL

079 694 1215

connor@realgroup.co.za



YANICK DJEMBA

067 043 7513

yanick@realgroup.co.za

