

LA VETTA

ANDERMATT
1.444 M

Floorplans

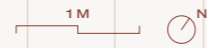
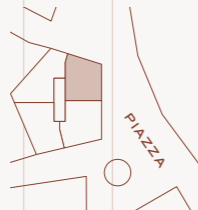
Italian design meets Swiss precision

La Vetta represents the pinnacle of mountain living – iconic Italian design, a vibrant piazza, surrounded by unforgettable Swiss mountain landscapes. With interiors crafted by the world renowned *Park Associati*, these breathtaking spaces are as stunning as they are cosy. *Modern comfort* and *elegance effortlessly* intertwine with *design* that harkens back to the romance of a different era. All residences and penthouses are inspired and furnished by *Italian interior design classics* from the mid-century. The building itself is an outstanding example of Swiss architecture with an extraordinary shape designed by Swiss *SLIK Architekten*.



Residence 1

1ST FLOOR

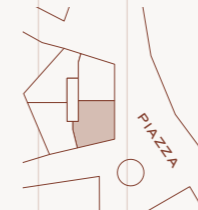
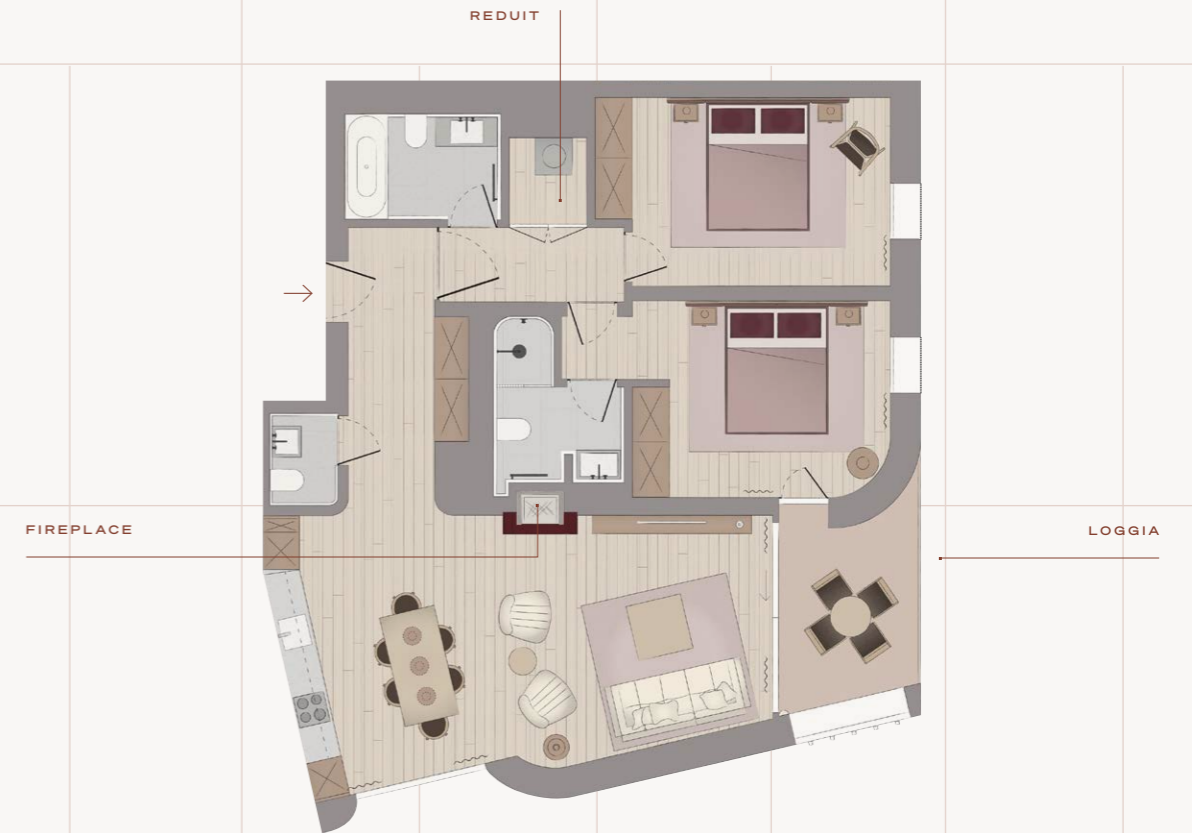


1.OG.1
ROOMS: 3.5
BEDROOMS: 2
LOGGIA: 5.4 M²
TOTAL: 85.8 M²

'Total' describes the apartment area plus 50% of any loggia and 25% of the cellar.

Residence 2

1ST FLOOR

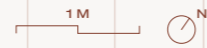
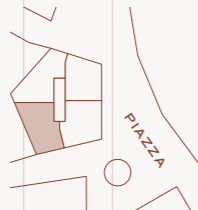


1.OG.2
ROOMS: 3.5
BEDROOMS: 2
LOGGIA: 6.6 M²
TOTAL: 91.0 M²

'Total' describes the apartment area plus 50% of any loggia and 25% of the cellar.

Residence 3

1ST FLOOR

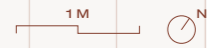
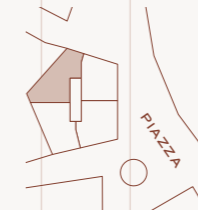
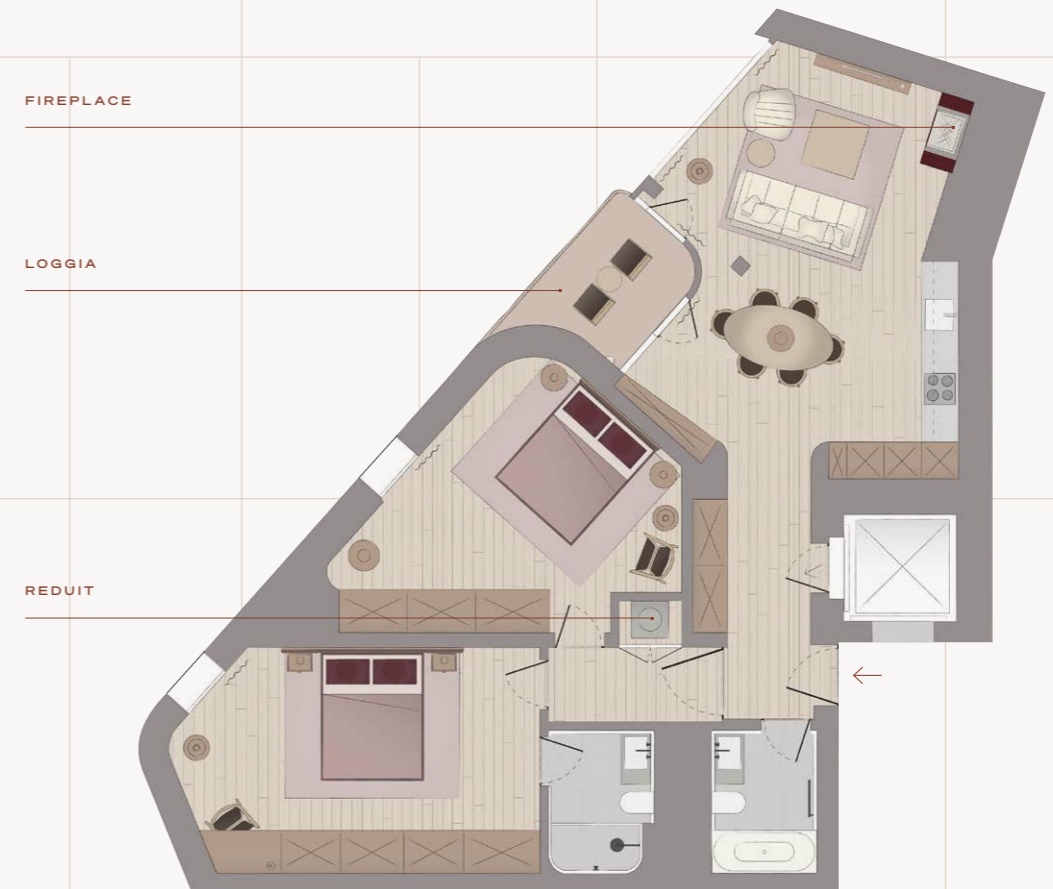


1.OG.3
ROOMS: 3.5
BEDROOMS: 2
LOGGIA: 4.4 M²
TOTAL: 94.2 M²

'Total' describes the apartment area plus 50% of any loggia and 25% of the cellar.

Residence 4

1ST FLOOR

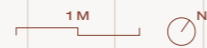
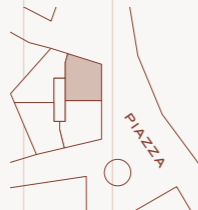


1.OG.4
ROOMS: 3.5
BEDROOMS: 2
LOGGIA: 4.6 M²
TOTAL: 95.3 M²

'Total' describes the apartment area plus 50% of any loggia and 25% of the cellar.

Residence 5

2ND FLOOR

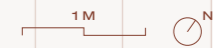
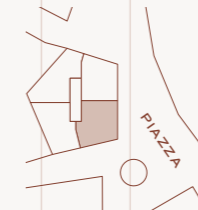
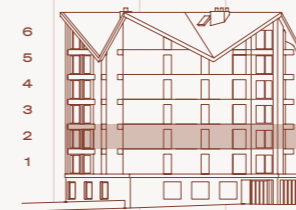
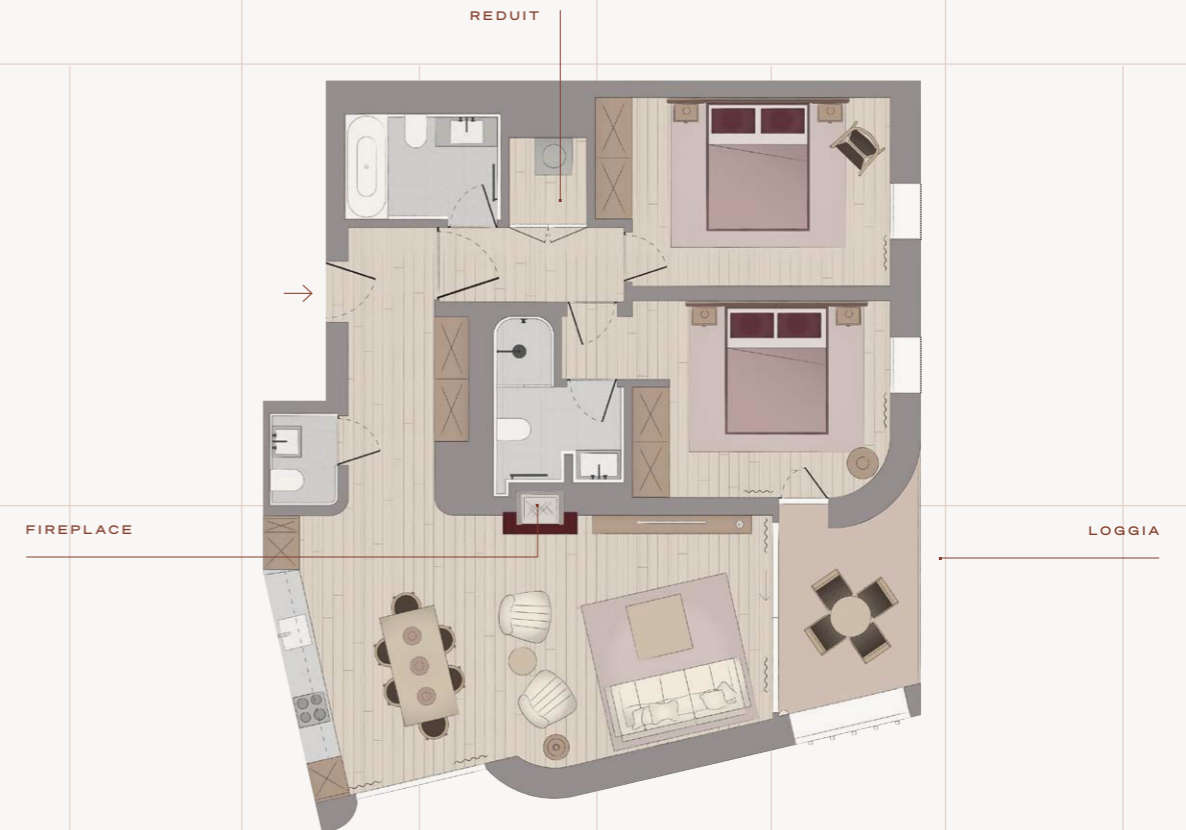


2.OG.1
ROOMS: 3.5
BEDROOMS: 2
LOGGIA: 5.4 M²
TOTAL: 86.0 M²

'Total' describes the apartment area plus 50% of any loggia and 25% of the cellar.

Residence 6

2ND FLOOR

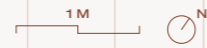
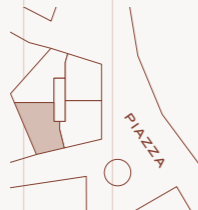


2.OG.2
ROOMS: 3.5
BEDROOMS: 2
LOGGIA: 6.6 M²
TOTAL: 91.2 M²

'Total' describes the apartment area plus 50% of any loggia and 25% of the cellar.

Residence 7

2ND FLOOR

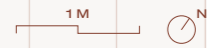
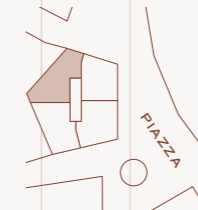


2.OG.3
 ROOMS: 3.5
 BEDROOMS: 2
 LOGGIA: 4.4 M²
 TOTAL: 94.4 M²

'Total' describes the apartment area plus 50% of any loggia and 25% of the cellar.

Residence 8

2ND FLOOR

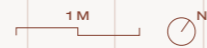
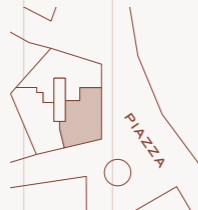


2.OG.4
 ROOMS: 3.5
 BEDROOMS: 2
 LOGGIA: 4.6 M²
 TOTAL: 95.4 M²

'Total' describes the apartment area plus 50% of any loggia and 25% of the cellar.

Residence 9

3RD FLOOR

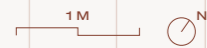
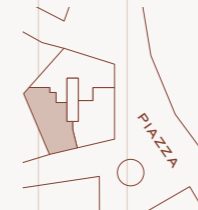
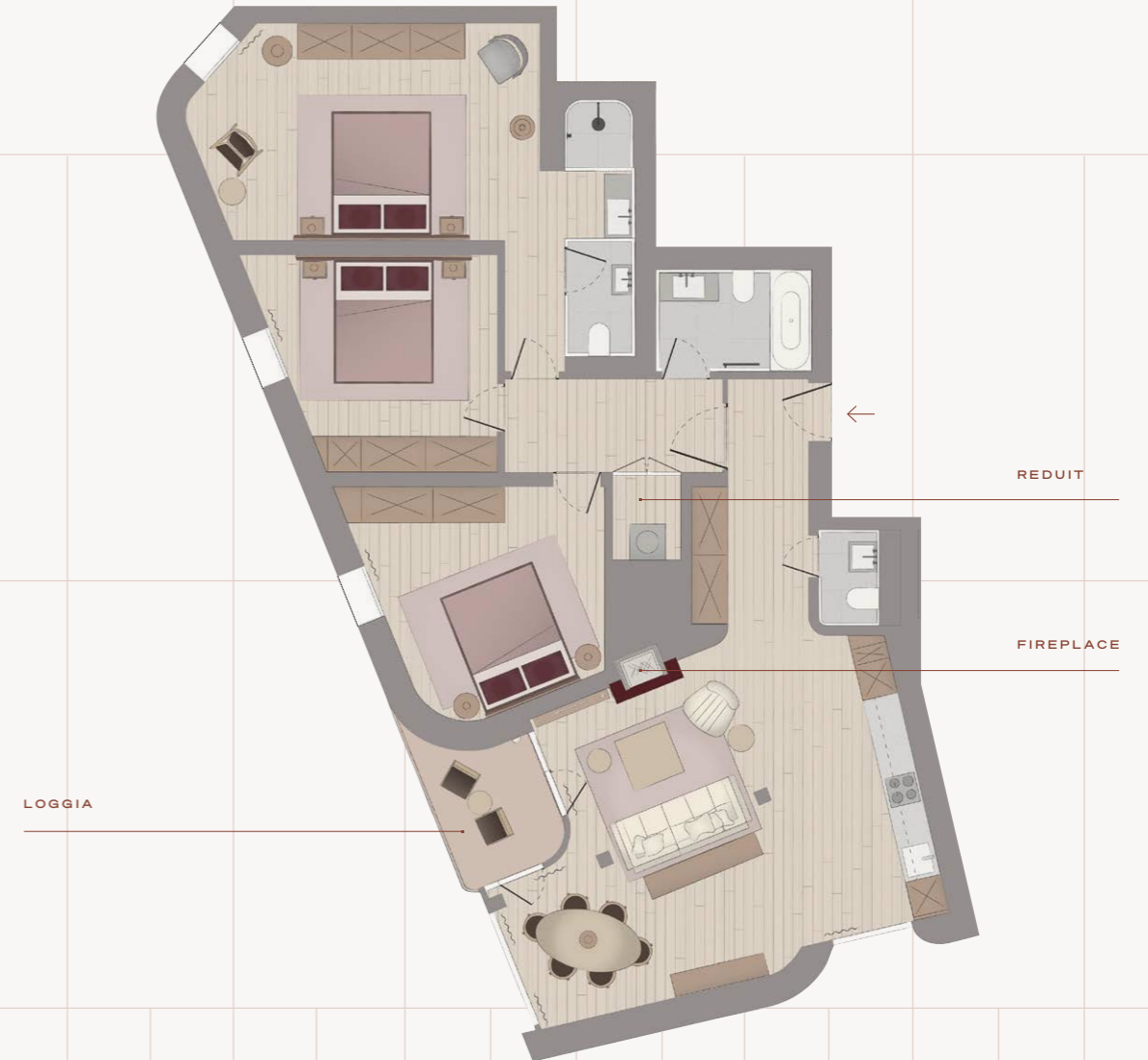


3.OG.1
 ROOMS: 4.5
 BEDROOMS: 3
 LOGGIA: 6.6 M²
 TOTAL: 106.6 M²

'Total' describes the apartment area plus 50% of any loggia and 25% of the cellar.

Residence 10

3RD FLOOR

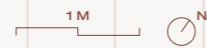
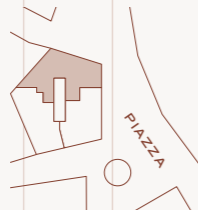
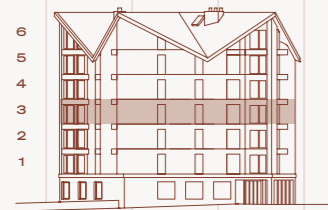


3.OG.2
 ROOMS: 4.5
 BEDROOMS: 3
 LOGGIA: 4.4 M²
 TOTAL: 118.0 M²

'Total' describes the apartment area plus 50% of any loggia and 25% of the cellar.

Residence 11

3RD FLOOR

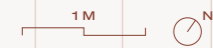
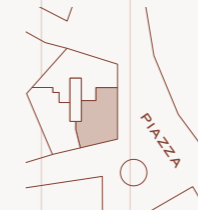
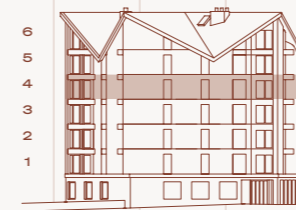


3.OG.3
ROOMS: 4.5
BEDROOMS: 3
LOGGIA: 10.0 M²
TOTAL: 141.6 M²

'Total' describes the apartment area plus 50% of any loggia and 25% of the cellar.

Residence 12

4TH FLOOR

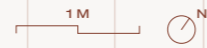
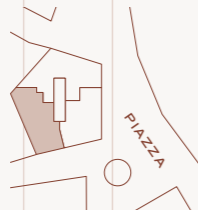
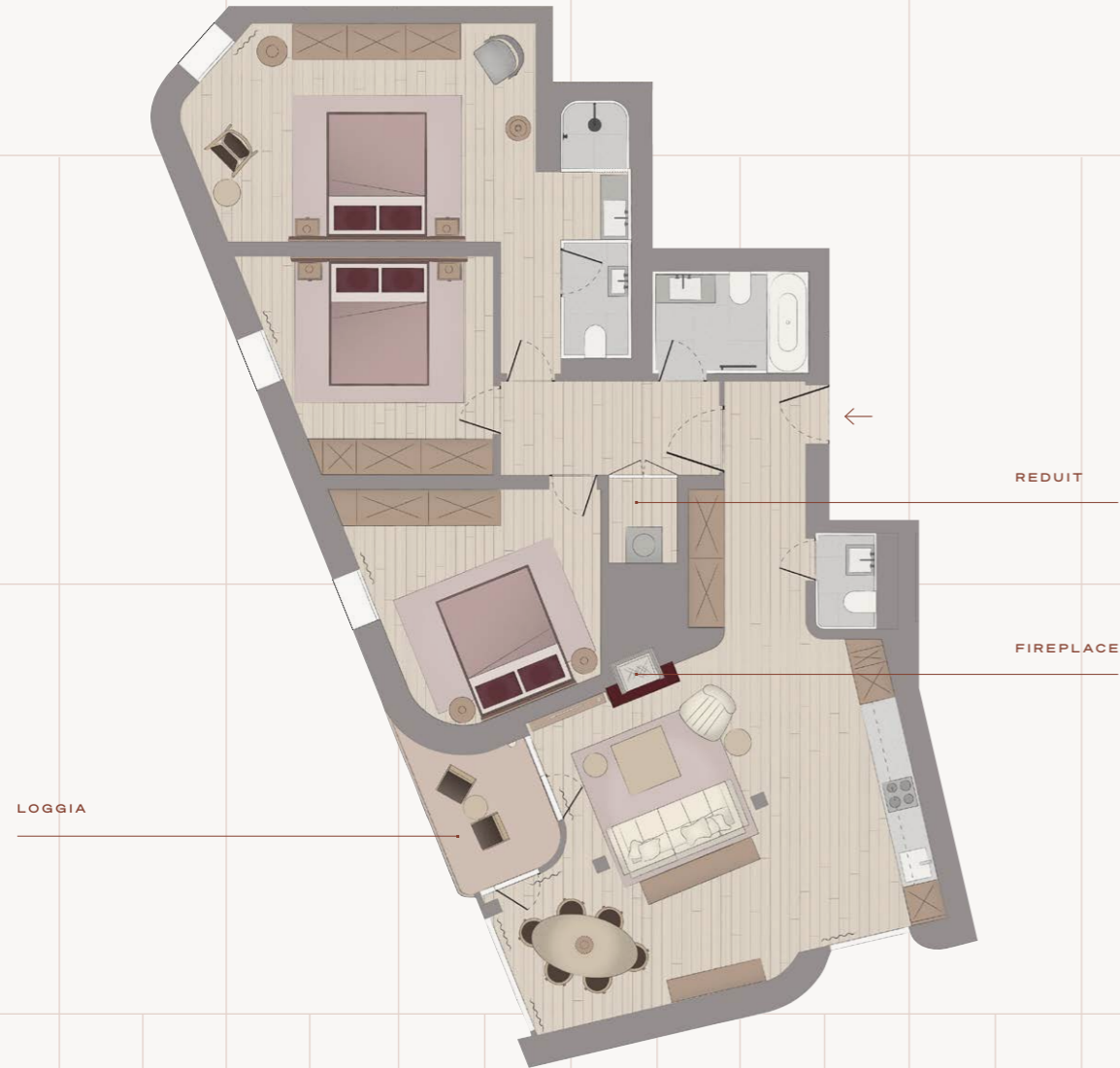


4.OG.1
ROOMS: 4.5
BEDROOMS: 3
LOGGIA: 6.6 M²
TOTAL: 107.2 M²

'Total' describes the apartment area plus 50% of any loggia and 25% of the cellar.

Residence 13

4TH FLOOR

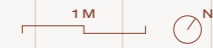
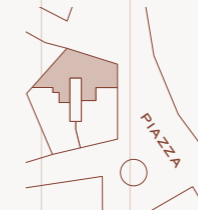


4.OG.2
ROOMS: 4.5
BEDROOMS: 3
LOGGIA: 4.4 M²
TOTAL: 118.3 M²

'Total' describes the apartment area plus 50% of any loggia and 25% of the cellar.

Residence 14

4TH FLOOR



4.OG.3
ROOMS: 4.5
BEDROOMS: 3
LOGGIA: 10.0 M²
TOTAL: 141.9 M²

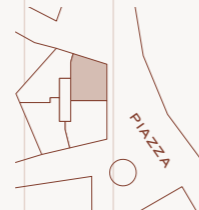
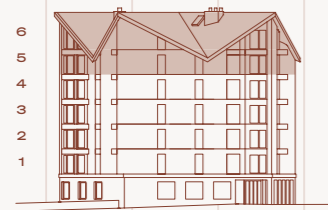
'Total' describes the apartment area plus 50% of any loggia and 25% of the cellar.





Penthouse 1

5TH FLOOR

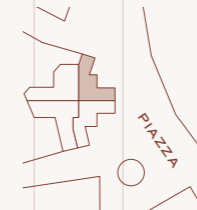


'Total' describes the apartment area plus 50% of any loggia and 25% of the cellar.

6TH FLOOR

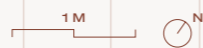
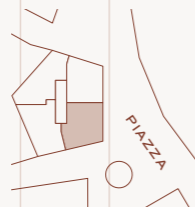
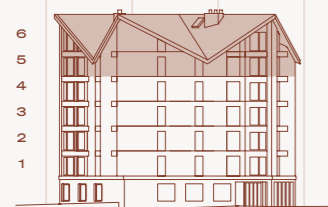


5.OG.1
ROOMS: 5.5
BEDROOMS: 4
LOGGIA: 5.4 M²
TOTAL: 141.6 M²



Penthouse 2

5TH FLOOR

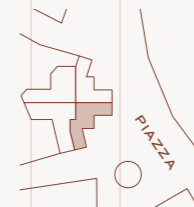


'Total' describes the apartment area plus 50% of any loggia and 25% of the cellar.

6TH FLOOR

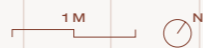
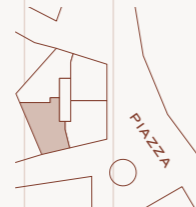
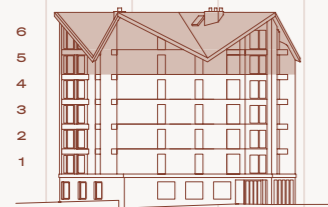


5.OG.2
ROOMS: 5.5
BEDROOMS: 4
LOGGIA: 6.6 M²
TOTAL: 144.3 M²



Penthouse 3

5TH FLOOR

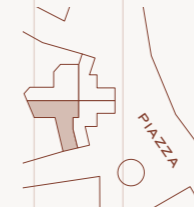


'Total' describes the apartment area plus 50% of any loggia and 25% of the cellar.

6TH FLOOR

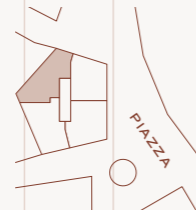
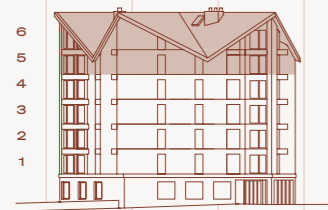


5.OG.3
ROOMS: 4.5
BEDROOMS: 3
LOGGIA: 4.4 M²
TOTAL: 162.2 M²



Penthouse 4

5TH FLOOR

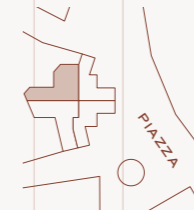


'Total' describes the apartment area plus 50% of any loggia and 25% of the cellar.

6TH FLOOR

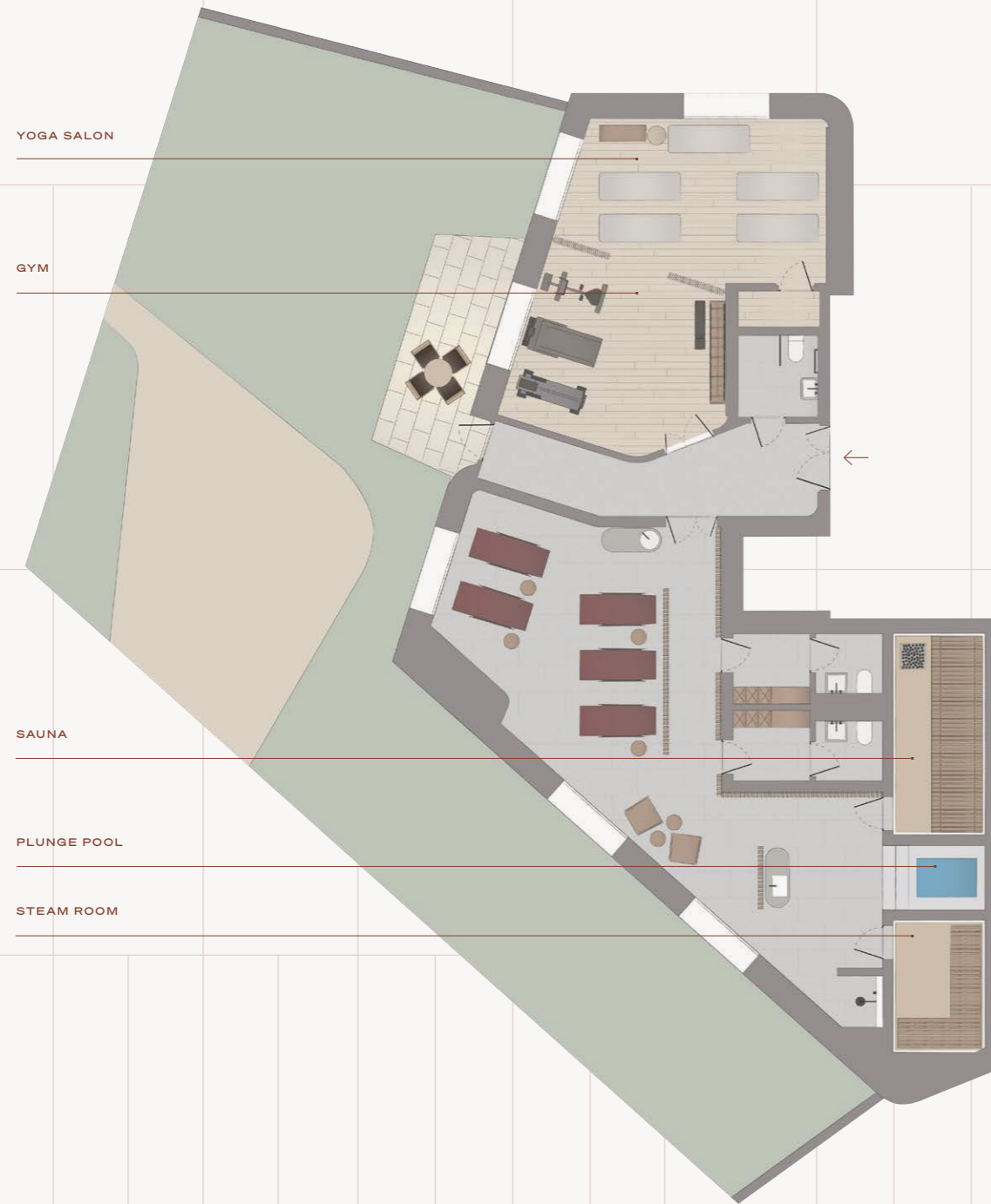


5.OG.4
ROOMS: 4.5
BEDROOMS: 3
LOGGIA: 4.6 M²
TOTAL: 151.6 M²



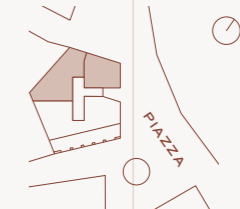






Owner Amenities

GROUND FLOOR



La Vetta doesn't just mean relaxing at home and adventuring in the mountains. You'll also enjoy a host of *world-class amenities* including a peaceful *yoga salon*, a professional *gym*, a luxurious *sauna and steam room*, and spacious *ski and bike room*.





© 2023
Andermatt Swiss Alps AG
Gotthardstrasse 2
CH 6490 Andermatt
+41 41 888 77 99

realestate@andermatt-swissalps.ch
www.andermatt-lavetta.ch



an ORASCOM
DEVELOPMENT
COMMUNITY