



YOUR LAUCHERNALP 2023 OVERVIEW

# Luxury Apartments



# One Bedroom Apartment 5

The Apartment in our Amethyst building has 89,25m2 living space. With 1 bedroom and en-suite bathroom, and a sofa bed in the living room. It comes with an open plan living room, dining table, and a fully equipped kitchen.

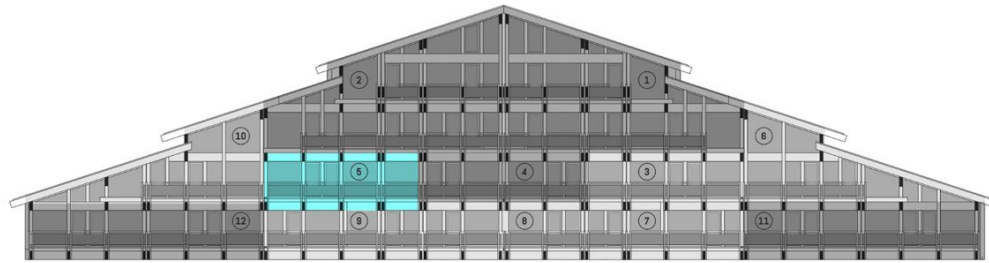
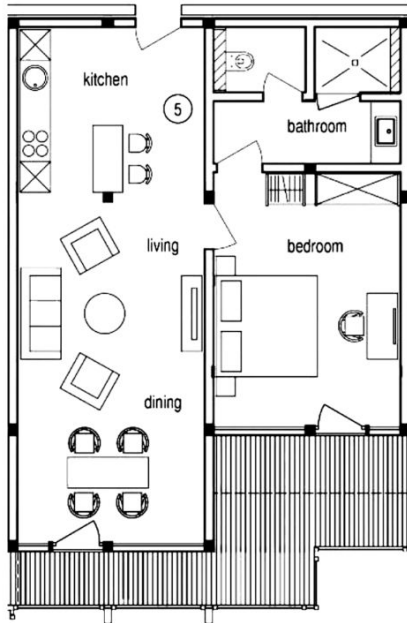




# Individual Apartment Floorplans

## Apartment 5

### APARTMENT FLOORPLAN



RESIDENCE	LEVEL	BEDROOMS	SELLABLE SIZE	BALCONY/TERRACE
5	AVAILABLE FLOORS -1	1 BED	89,25M <sup>2</sup>	BALCONY

# Master Guide

## Units Now Selling

### OVERVIEW OF AVAILABLE UNITS

Apartment	Floor Level	SQM	Bedrooms	Bathrooms	Balcony/Terrace	Availability
1 Penthouse	0 + 1	230.13 m <sup>2</sup>	3 Bed	2	Balcony	Sold
2 Penthouse	0 + 1	227.42 m <sup>2</sup>	2 Bed	2	Balcony	Sold
3	-1	89.30 m <sup>2</sup>	1 Bed	1	Balcony	Available
4	-1	99.21 m <sup>2</sup>	1 Bed	1	Balcony	Sold
5	-1	89.25 m <sup>2</sup>	1 Bed	1	Balcony	Available
6 Loft	-1	101.7 m <sup>2</sup>	2 Bed	1	Balcony	Available
7	-2	91.25 m <sup>2</sup>	1 Bed	1	Terrace	Available
8	-2	84.66 m <sup>2</sup>	1 Bed	1	Terrace	Available
9	-2	91.20 m <sup>2</sup>	1 Bed	1	Terrace	Available
10 Loft	-1	109.92 m <sup>2</sup>	2 Bed	1	Balcony	Available
11	-2	106.16 m <sup>2</sup>	1 Bed	1	Terrace	Sold
12	-2	115.43 m <sup>2</sup>	1 Bed	1	Terrace	Sold

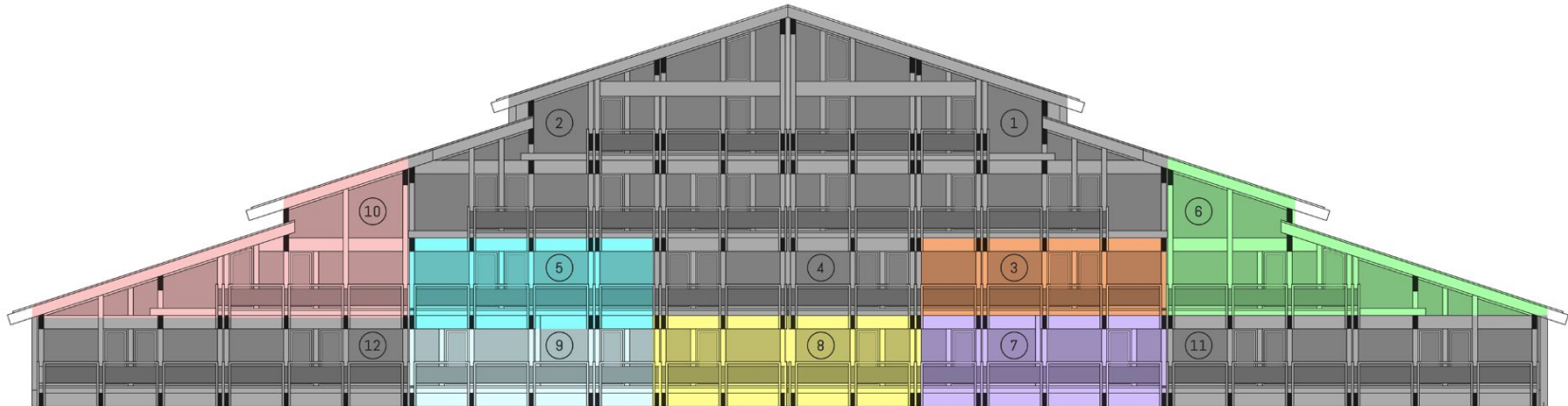
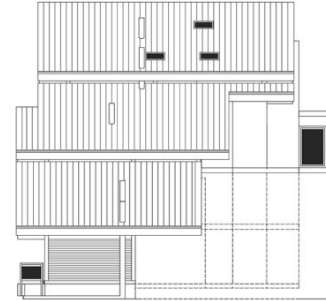
### BLOCK ISOMETRIC

THIRD

SECOND

FIRST

GROUND



# Video Walkthrough

Take a virtual tour with us of our One Bedroom Apartment 5



[https://drive.google.com/file/d/1N4HaJ9N3LI\\_V4ubYxNPGcInHxpShQJA/view?usp=share\\_link](https://drive.google.com/file/d/1N4HaJ9N3LI_V4ubYxNPGcInHxpShQJA/view?usp=share_link)

