

Lauchernalp

SWISS RESORT RESIDENCES

Amethyst Apartments

LAUCHERNALP RESORT RESIDENCES - PHASE 1



PROPERTY PROFILE

Stylish Comfort
at 2.000 m in the heart
of the Swiss Alps

INVEST IN FOREVER

Introducing Lauchernalp Swiss Resort Residences

A WORLD CLASS DESTINATION

The region is part of a UNESCO World Heritage site, a ski and spa resort, in a league of its own. The mountain panorama reveals a landscape that is simultaneously incomparably unspoiled, wild and peaceful. Lauchernalp has kept its boutique and friendly character, and invites you to relax and spend time in nature away from the major tourist centres, but with excellent access. Every season offers vast possibilities for exploring: skiing and free-riding with ski-in ski-out access, gorgeous hike and bike trails, strong cultural traditions and awe-inspiring panoramic views. Invest in forever and experience peaceful alpine living with style and comfort.



“Possibly the last chance to fulfill your dream of owning an exclusive rare family property, immersed within the Swiss Alps.”

The area is a paradise for Winter sports enthusiasts. In addition to the close proximity of the ski lifts to Lauchernalp Resort Residences, there is also a helicopter-landing pad available for VIP guests.

On the glacier, at an altitude of more than 3,000 metres, you will find the highest winter hiking trail in Europe with a spectacular panorama of more than forty 4000 metres peaks.

Spring, summer and autumn offer excellent mountain biking, climbing, and hiking options.

AMETHYST RESIDENCE
LAUCHERNALP

Restoring Life’s Equilibrium.

THE NATURE OF THINGS

Experience Exclusive Alpine Living with Style and Comfort

BUYING OPPORTUNITY

Amethyst is the first building of the Lauchernalp Resort Residences. In 2023 and 2024 two more buildings and a Clubhouse with members wellness center and lounge will follow. If you're interested in the next phases, please check out www.lauchernalp-resort.ch to learn more about our plans.

There are a few units available for purchase in **Amethyst**.

- RESIDENCES IN A MANAGED APARTMENT HOTEL
- OPEN FOR FOREIGN OWNERSHIP
- ATTRACTIVE CAPITAL GAINS HEADROOM AND RENTAL YIELDS
- FULLY FURNISHED ONE BEDROOM, AND TWO BEDROOMS +
- TURN KEY PROFESSIONAL RENTAL MANAGEMENT AND MAINTENANCE

The Residences come with

- TERRACES AND GLASS BALCONIES WITH 180 DEGREE UNSPOILT MOUNTAIN VIEWS
- FULLY EQUIPPED MODERN KITCHENS FOR LONG STAYS
- FAST SWISSCOM INTERNET CONNECTIONS FOR HD ENTERTAINMENT AND REMOTE WORKING

The Resort Residences features

- SKI AND MOUNTAIN BIKE ROOMS
- CONCIERGE SERVICES

Capitalise on this unique opportunity to make an attractive investment in prime Swiss Alps real estate. The exclusive apartments are fully furnished and notable for the quality of their construction and fittings. The utmost in user comfort guarantees the ideal prerequisites for profit and long-term value preservation.

Phase 2 & phase 3 of the Resort Residences will include a Clubhouse with Wellness Center, and Members Lounge



Fully equipped modern kitchen and open plan living



Glass fiber internet for HD entertainment & remote working

Master Guide Units Now Selling

OVERVIEW OF AVAILABLE UNITS

Apartment	Floor Level	SQM	Bedrooms	Bathrooms	Balcony/Terrace	Availability
1 Penthouse	0 + 1	230.13 m2	3 Bed	2	Balcony	Sold
2 Penthouse	0 + 1	227.42 m2	2 Bed	2	Balcony	Sold
3	-1	89.30 m2	1 Bed	1	Balcony	Available
4	-1	99.21 m2	1 Bed	1	Balcony	Sold
5	-1	89.25 m2	1 Bed	1	Balcony	Available
6 Loft	-1	101.7 m2	2 Bed	1	Balcony	Available
7	-2	91.25 m2	1 Bed	1	Terrace	Available
8	-2	84.66 m2	1 Bed	1	Terrace	Available
9	-2	91.20 m2	1 Bed	1	Terrace	Available
10 Loft	-1	109.92 m2	2 Bed	1	Balcony	Available
11	-2	106.16 m2	1 Bed	1	Terrace	Sold
12	-2	115.43 m2	1 Bed	1	Terrace	Sold

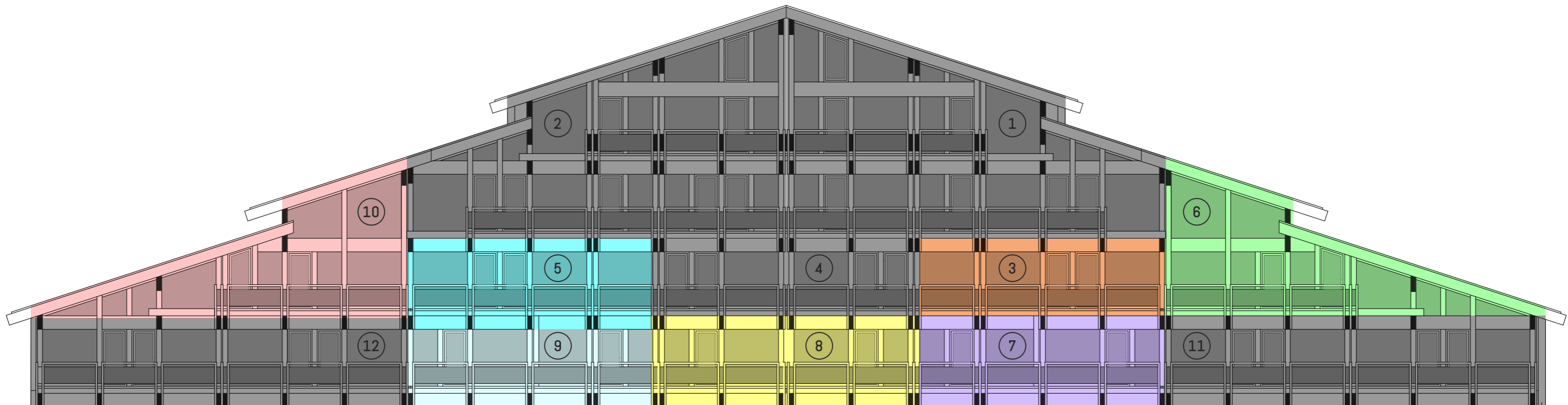
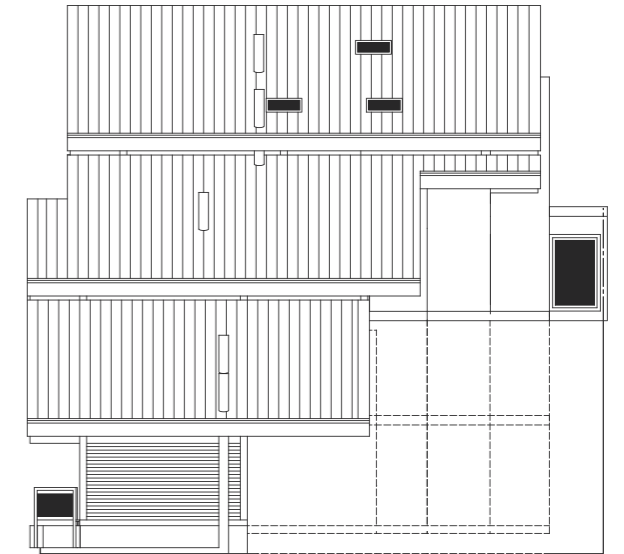
BLOCK ISOMETRIC

THIRD

SECOND

FIRST

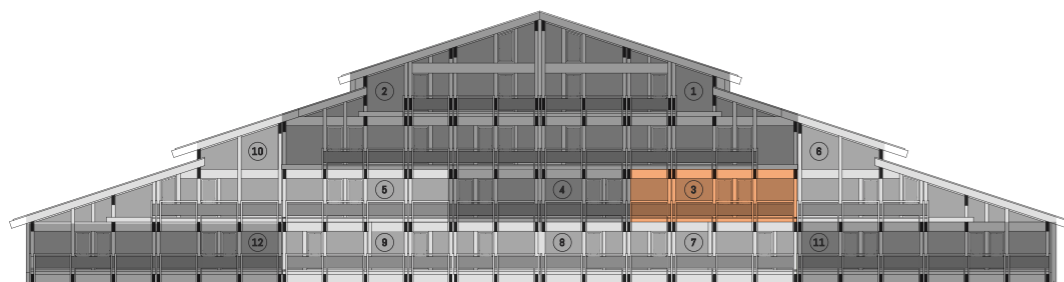
GROUND



Individual Apartment Floorplans

Apartment 3

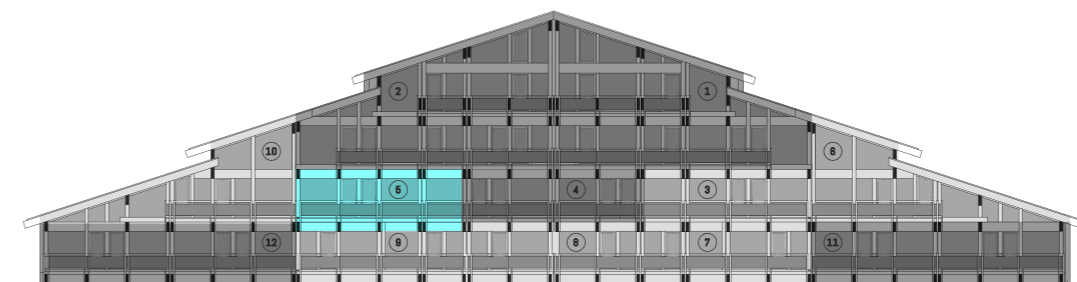
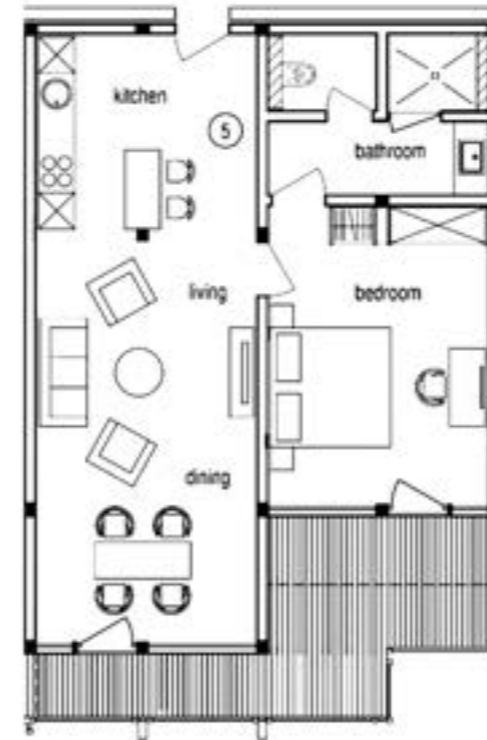
APARTMENT FLOORPLAN



RESIDENCE	LEVEL	BEDROOMS	SELLABLE SIZE	BALCONY/TERRACE
3	AVAILABLE FLOORS -1	1 BED	89,30M ²	BALCONY

Apartment 5

APARTMENT FLOORPLAN

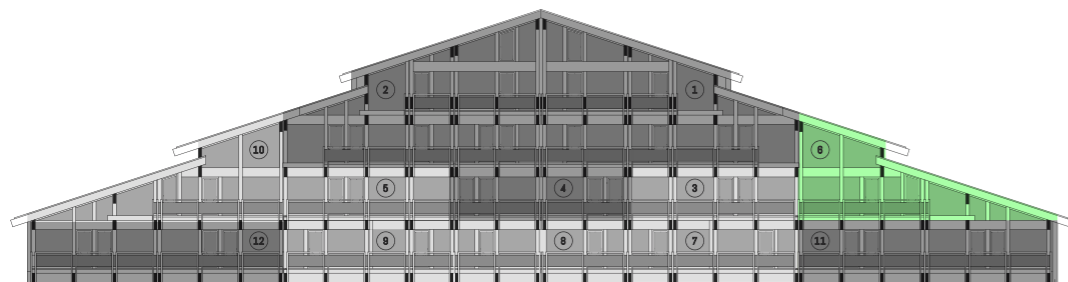


RESIDENCE	LEVEL	BEDROOMS	SELLABLE SIZE	BALCONY/TERRACE
5	AVAILABLE FLOORS -1	1 BED	89,25M ²	BALCONY

Individual Apartment Floorplans

Apartment 6

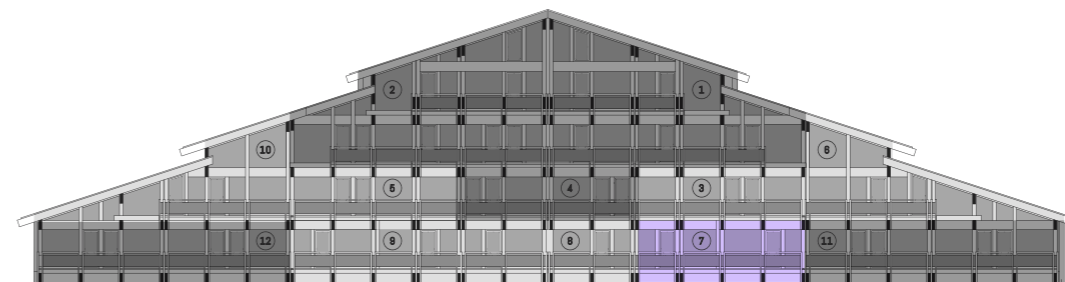
APARTMENT FLOORPLAN INCLUSIVE OF LOFT



RESIDENCE	LEVEL	BEDROOMS	SELLABLE SIZE	BALCONY/TERRACE
6	AVAILABLE FLOORS -1	2 BED *LOFT	101,70M ²	BALCONY

Apartment 7

APARTMENT FLOORPLAN

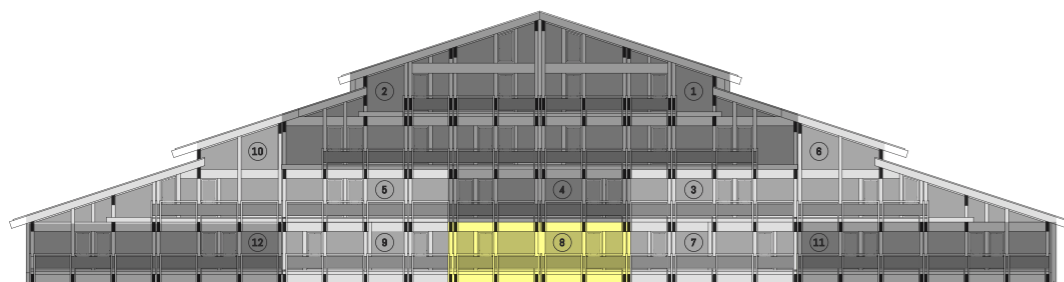


RESIDENCE	LEVEL	BEDROOMS	SELLABLE SIZE	BALCONY/TERRACE
7	AVAILABLE FLOORS -1	1 BED	91,25M ²	TERRACE

Individual Apartment Floorplans

Apartment 8

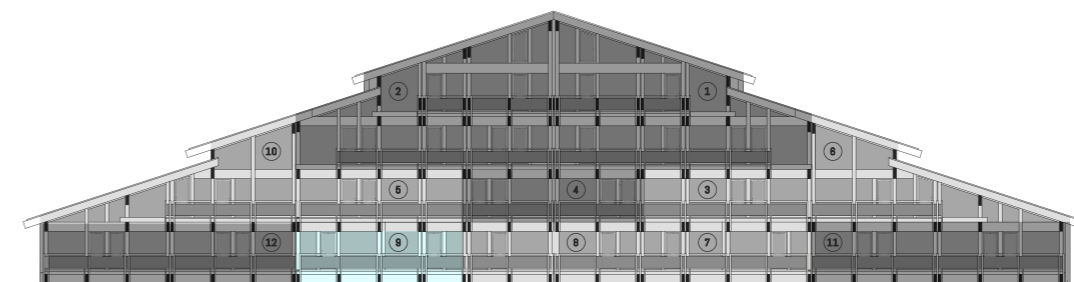
APARTMENT FLOORPLAN



RESIDENCE	LEVEL	BEDROOMS	SELLABLE SIZE	BALCONY/TERRACE
8	AVAILABLE FLOORS -1	1 BED	84,66M ²	TERRACE

Apartment 9

APARTMENT FLOORPLAN INCLUSIVE OF LOFT

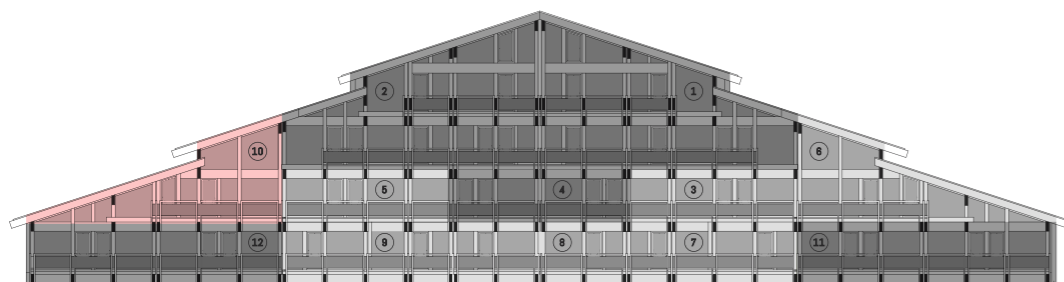


RESIDENCE	LEVEL	BEDROOMS	SELLABLE SIZE	BALCONY/TERRACE
9	AVAILABLE FLOORS -1	1 BED	91,20M ²	TERRACE

Individual Apartment Floorplans

Apartment 10

APARTMENT FLOORPLAN INCLUSIVE OF LOFT



RESIDENCE	LEVEL	BEDROOMS	SELLABLE SIZE	BALCONY/TERRACE
10 AVAILABLE	FLOORS -1	2 BED *LOFT	109,92M ²	BALCONY

Why Buy in Lauchernalp A Long-term Investment with Immediate Benefits

INVEST IN FOREVER

Residences are treasures to be valued and enjoyed throughout your lifetime but also across future generations. Not only will you benefit from hassle-free living in your own private paradise, but there is potential to appreciate financial returns in years to come.



RESIDENTIAL

Residences

- 1 Bedroom
- 2 Bedroom
- 3 Bedroom Penthouses



UNESCO

Unesco

- UNESCO World Heritage Site
- Unspoiled, protected Nature
- 300 Days of Sunshine



FINANCIAL

Prices from CHF 1.000.000

- CHF 11'000 CHF per m2
- Solid rental yields
- Attractive capital gains headroom



FEATURES

Ski-in Ski-out

- Ski & Mountain Bike Room



SUSTAINABILITY

Sustainability

- Highly insulated DAVINCI Building
- Geothermal heat pumps
- 100% Green Energy



SERVICES

Concierge

- Luggage Transport
- Ski, snowboard, cross country lessons
- Hike/climbing guides
- Restaurant delivery & reservations
- Washing & cleaning services

WHY BUY IN LAUCHERNALP

- THE LAUCHERNALP IS EMBRACED BY THE UNESCO WORLD HERITAGE SITE
- UNTOUCHED LANDSCAPE
- RARE OPPORTUNITY TO OWNING PROPERTY IN THE SWISS ALPS
- BOUTIQUE RESORT & RESIDENCES
- ACTIVITIES ALL YEAR ROUND
- SKIING, SNOWBOARDING, MOUNTAIN BIKING, HIKING, MOUNTAIN LAKE SWIMMING, SNOW SHOEING, RIDING WITH HUSKY DOGS ETC
- SKI-IN SKI-OUT DIRECT ACCESS
- 300 DAYS OF SUNSHINE

CAPTURING THE VERY ESSENCE OF ALPINE LIVING

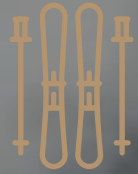
We offer you the opportunity to purchase your very own exquisite residence from a range of different sizes. Experience DAVINCI HAUS innovative timber framed architecture combined with luxurious interior design, set in a stunning location far away from the major tourist centres.

VIEW FROM OUR TERRACES

The building has 4 floors with staggered roofs. On the valley side, guests enjoy spacious balconies with grand, extraordinary views of the mountain scenery. The south-facing side has been designed with an astonishing 40m wide fully glazed gable.

Enjoy the freedom of Access to our On-site Amenities. Your Residence includes the following exclusive features.

SEAMLESS, ACCESSIBLE, INTEGRATED LIVING



SKI ROOM

Ample locker space to safely store and dry your gear.



MTB BIKE ROOM

Store and repair your valuable gear in a safe space.



ELEVATOR

Connecting your apartment to our on-site amenity and shared spaces



HIGH SPEED SWISSCOM INTERNET

Enabling HD entertainment and remote working



Experience Exclusive Alpine Living with Style and Comfort

Venture into the Valley Your Neighbourhood awaits you

UNLOCK YOUR FUTURE LIFESTYLE
ADVENTURE AWAITS

Lauchernalp is found nestled within the Lötschental

AN INTIMATE SWISS ALPS DESTINATION

GLOBAL INTERNATIONAL INFOMAP

Lauchernalp, Switzerland

TRAVEL TIME



BY CAR

- 1HR45 DRIVE FROM BERN
- 2HR20 DRIVE FROM GENEVA
- 2HR50 DRIVE FROM ZÜRICH
- 2HR45 DRIVE FROM MILAN

TRAVEL TIME



BY PUBLIC TRANSPORT

- JOURNEY TIME FROM BERN ± 1HR30
- FROM ZÜRICH AND BASEL ± 3HRS



Within easy reach of Bern, Zurich, Geneva, Milan, and München. The Lötschental is the largest valley on the northern side of the Rhône valley in the Canton of Valais. It lies in the Bernese Alps, with the Lonza river running down the length of the valley from its source within the Langgletscher glacier.

Imposing peaks seem to embrace the villages with their larch-covered foothills. Gushing streams and placid lakes add their own touches. The outstanding transport connections mean that the Lötschental is easy to reach throughout the year.

Lauchernalp Residences belongs to the unique destination of Lötschental valley, within easy reach of Bern, Geneva, Zurich and Milan.

LOCAL TRANS-LOCAL INFOMAP

Lauchernalp, Switzerland

NEAREST RESORTS



RESORTS

- ALETSCHEG – 50MIN
- CRANS MONTANA – 55MIN
- ZERMATT – 1HR15
- GRINDELWALD – 1HR30
- SAAS FE – 1HR30
- CHAMONIX – 2HR

