



TurfalkeSuites

Andermatt



# DISCOVER

The beauty of the Alps

**2** **ANDERMATT**  
Your all season paradise

**6** **ADVENTURE**  
Your mountain world

**10** **CHALLENGE**  
Your golf game

**16** **CHALET SUITES**  
Your project

**20** **CHALET STYLE**  
Your way of life

**24** **WELLNESS & SPA**  
Your recovery

**28** **MATERIAL**  
You deserve it

**30** **MASTERPIECE**  
Your individuality

**36** **EXPLORE**  
Your day trips

**40** **CONTACT**  
You are important to us



# ANDERMATT

Your all season paradise

All year round holiday destination with sports and leisure facilities

At 1444 metres a.s.l. in the Swiss Alps

A safe investment in the centre of Switzerland

Excellent transit connections

The possibility of purchasing real estate by international buyers

Secure settlement due to Swiss law



# THE HEART OF EUROPE

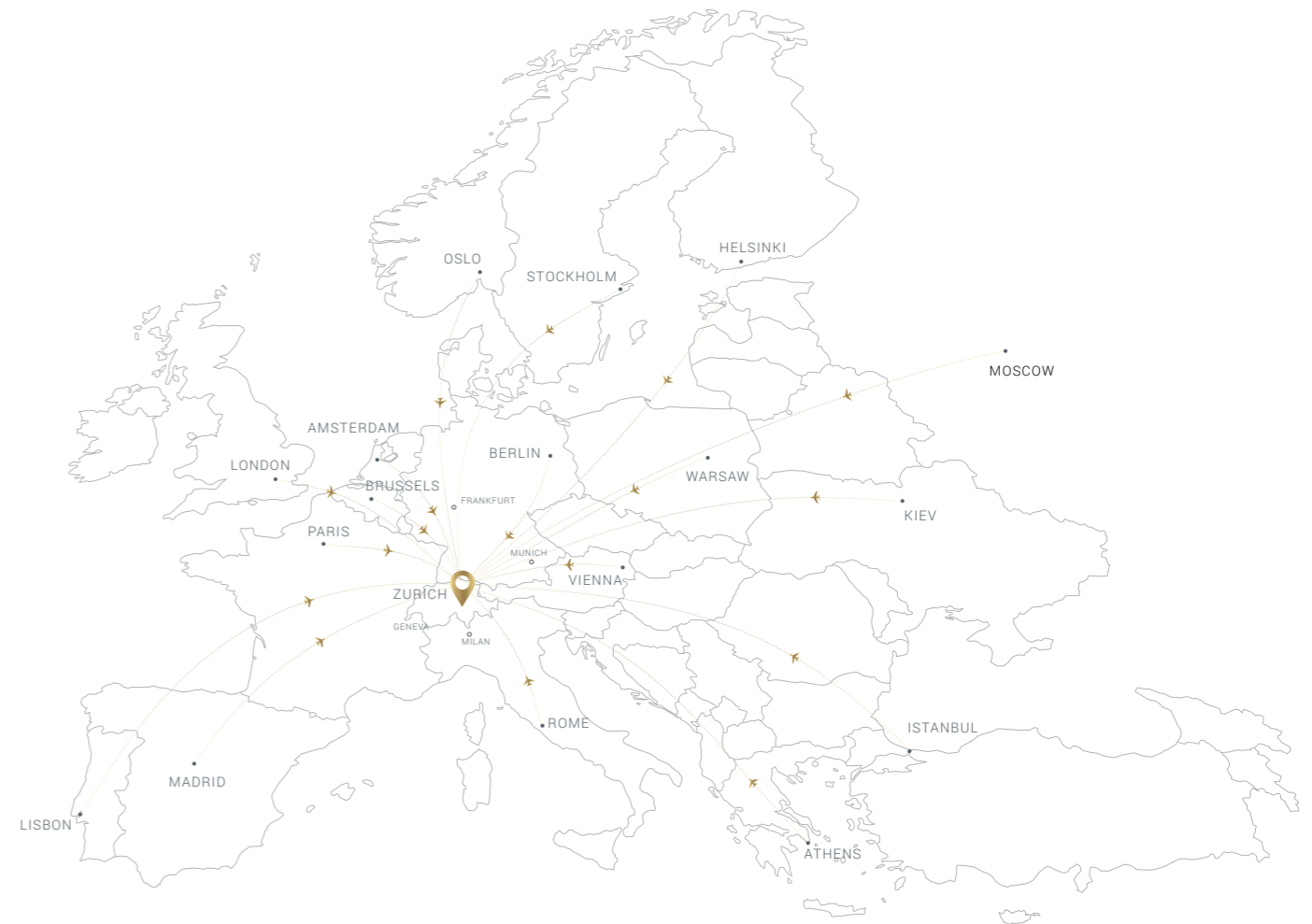
You arrive effortlessly

Andermatt is located in the centre of Europe and the heart of Switzerland.

The destination stands out because of its convenient transit connections and the advantage of having Zürich International Airport in close proximity.

The excellent highway and tunnel infrastructure in Switzerland ensures a convenient arrival from all directions.

At any time of year.



## JOURNEY TIMES



ZURICH - Andermatt	1.5hr
LUCERNE - Andermatt	1hr
BERNE - Andermatt	2hr
GENEVA - Andermatt	3.5hr
MILAN - Andermatt	2.5hr
MUNICH - Andermatt	4.5hr



PARIS - Zurich	1hr	WARSAW - Zurich	1.5hr
LONDON - Zurich	1.5hr	MOSCOW - Zurich	3hr
MADRID - Zurich	2hr	ATHENS - Zurich	2.5hr
BERLIN - Zurich	1.5hr	VIENNA - Zurich	1hr
OSLO - Zurich	2hr	KIEV - Zurich	3hr
ISTANBUL - Zurich	2.5hr		
STOCKHOLM - Zurich	2hr		
AMSTERDAM - Zurich	1hr		

# ADVENTURE

Your mountain world

The largest ski resort  
in central Switzerland



Cross-country skiing



Sledging,  
snowtubing



Snowboard, Skiing,  
Free Riding, Ace Snowpark



Snowshoeing  
and winter trips



Tours on skis



# WINTER

Your opportunities



- Activities for the whole family
- Skiing and snowboarding
- Freestyle
- Snowshoeing and winter trips
- Cross-country skiing
- Tours on skis
- Sledging / Snowtubing
- MATTI & DRUNI KidsArena
- Ski lessons for children and adults
- Ice rinks / Ice-skating
- Tours with E-Fatbike
- Après-Ski Train
- Glacier Express



# CHALLENGE

Your golf game

18-holes par  
72-championship course



6340 metres long

Ecologically developed

52 different lakes

Designed by the famous  
architect Kurt Rossknecht

Modern, alpine-style clubhouse  
with high class wine and food

44 butterfly species  
24 bird species



# SUMMER

Your opportunities



500 km of hiking trails and mountain bike paths

Five mountain passes (St Gotthard, Susten, Furka, Oberalp and Klausen)

Four river sources (Rhine, Reuss, Ticino, Rhone)

Mountain section of the Furka steam train

Guided tour to Göschenen, a village at the end of the St Gotthard Tunnel

'Sasso San Gottardo' museum

'Talmuseum Ursern' local history museum

Pfaffensprung crystal cave

Antonini quarry

Schöllenen Gorge and the devil's bridge

Suworow House and commemorative monument to Andermatt

Drives in an old carriage







# CHALET SUITES

## Your project

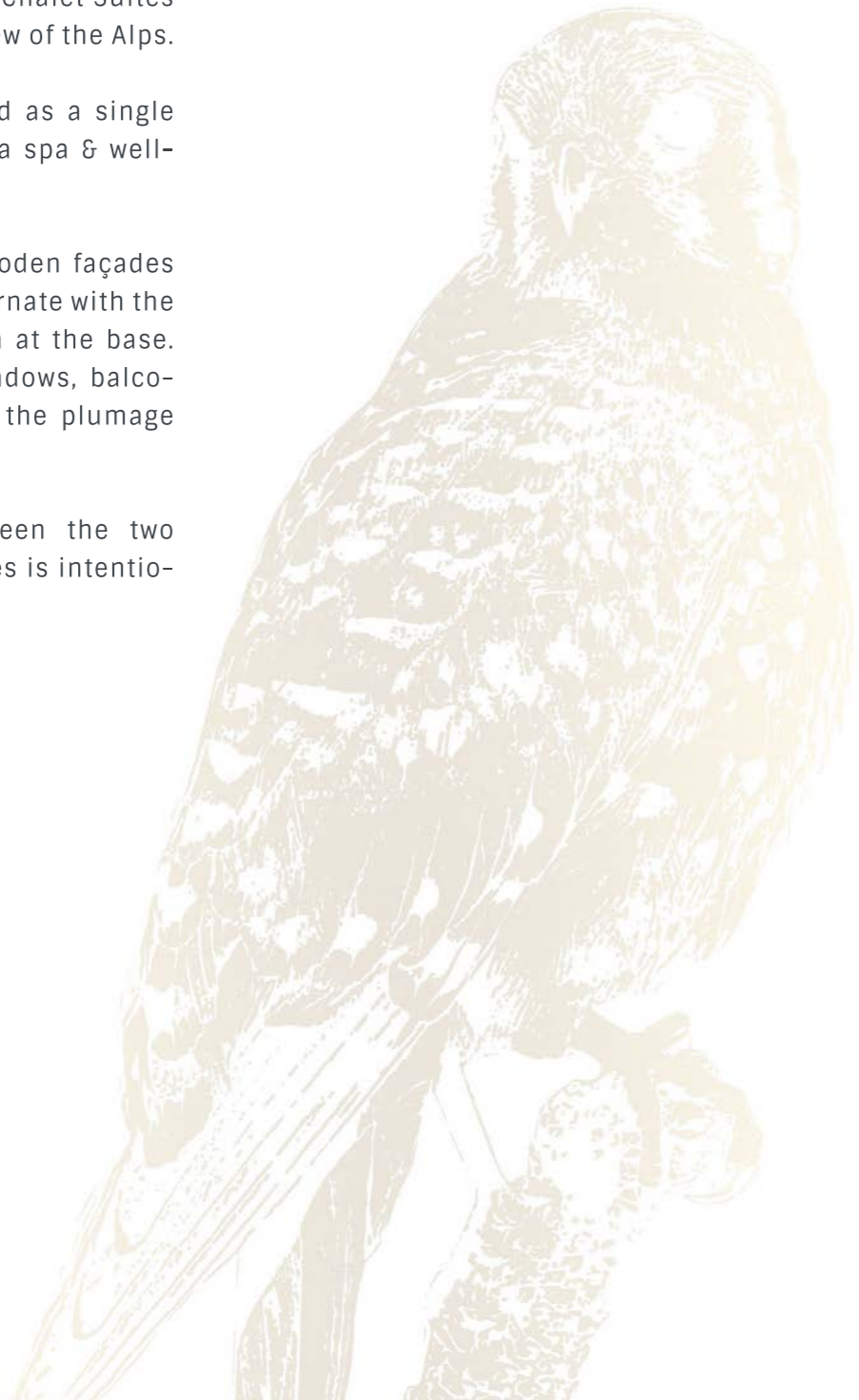
The project is in a privileged position in the part of the village called Andermatt Reuss.

In line with the River Reuss, all the Chalet Suites offer a breathtaking, unimpeded view of the Alps.

Both buildings have been designed as a single complex and are connected to by a spa & wellness area of more than 370 m<sup>2</sup>.

To have a dynamic volume, the wooden façades oriented in different directions alternate with the architectural element of the plinth at the base. The effect, combined with bow windows, balconies and dormer windows, recalls the plumage and wingtip of a falcon.

The architectural similarity between the two buildings making up TurmfalkeSutes is intentional yet respects their individuality.



TurmfalkeSuites 1



TurmfalkeSuites 2



Indoor Golf Simulator

Spa & Wellness

NW façade

River Reuss



### GUILLAUME CHAPALLAZ

Architect (ETH) at SWISS PROPERTY AG and planning and implementation manager of the digital project.

Guillaume previously worked as a design architect for international projects with Daniel Libeskind in New York.



### NATHANIEL LLOYD

Architect (OAA) assigned with the executive strategic planning at SWISS PROPERTY AG. As an expert, he is also responsible for the creative processing of rapid prototyping.

Nathaniel previously worked for the Riken Yamamoto architectural firm and Daniel Libeskind, New York.



# CHALET STYLE

Your way of life



# SHORTLY EXPLAINED

Your leisure



Chalet Suite, with apartments with a surface from 25 m<sup>2</sup> to 114 m<sup>2</sup>

Option of personalised redesign of the surface up to 270 m<sup>2</sup>

All units are completely equipped (FF&E + OS&E)

Luxury furnishing from well-known manufacturers

On request, our team will advise you on the colour, look, touch and feel of the final finishes.

We guarantee problem-free and complication-free purchase right through to the completed move.



# WELLNESS & SPA

Your recovery



# SPA & FITNESS

Your health



SPA AREA

Pool (12m x 4m)

Cascade

Swan neck mixer tap

Turkish bath, sauna & recovery room

Massage area (treatments can be booked at the Radisson Blue Hotel Reussen)



FITNESS ROOM

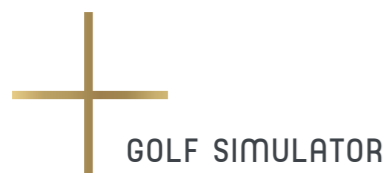
Treadmill

Ergometer

Spinning bikes or step

Dumbbells & exercise bench

Yoga mats & mirror walls



GOLF SIMULATOR

High-Tech simulator, option of playing on 200 different golf courses

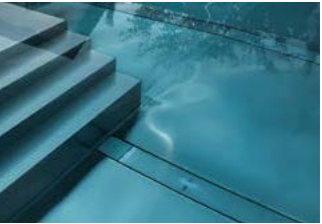
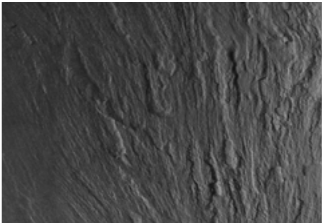
Bench with lounge area

Fridge



# MATERIAL

You deserve it





# MASTERPIECE

Your individuality



# NEED MORE SPACE?

You decide



Personalised blueprint planning up to 270 m<sup>2</sup>

Penthouses with 3 or 4 bedrooms

Wood-burning Fireplace

Direct access by elevator

Panoramic Mountain and river Reuss view without the risk of future obstacles



# CULTURE

Your entertainment

Andermatt Concert Hall

+ Berliner Philharmoniker

+ Lang Lang

+ Daniel Barenboim

+ Conferences, concerts  
and seminars

+ 650 seats

# EXPLORE

Your day trips



+ ZURICH 1.5h

+ LUCERNE 1h

+ MILAN 2.5h



# CULINARY

Your variety of tastes

Andermatt offers you, your family and your friends unexpected culinary delights.

Various places offering traditional Swiss cuisine, a rustic pizzeria in the village centre and the 1 star Michelin restaurant at The Chedi, recently appointed the best Japanese restaurant in Switzerland, will literally make your mouth water.

In addition, for the winter season 2019/2020, a unique meeting place for gourmets will be the Gutsch, the local mountain at Andermatt. Two top-class restaurants have been opened on the Gutsch - The Japanese by The Chedi and a second gourmet restaurant by Markus Neff (Chef of the Year 2007).

Experience Swiss hospitality.



# CONTACT

You are important to us



## DISCLAIMER

This brochure, with its text and graphic images, corresponds to the current state of planning at the time it was created. No claims can be made based on plans, designs, presentations, visualisations or descriptions. We specifically reserve the right to modify, adapt and change sizes in the execution of the construction project at all times. All the fittings and furnishings should only be considered as examples and are not included in the purchase price. All updates, adaptations and amendments are reserved. This documentation cannot be reproduced either wholly or partly. Mediation not requested do not give any right to payment by either the developer or authorised third parties. This sales brochure and the attachments are preliminary information and not an offer. These documents do not form part of subsequent purchase or employment contracts.

**SWISS PROPERTY AG**

Giesshübelstrasse 62D

8045 Zurich

Switzerland

T +41 44 344 10 10

[contact@turmfalkesuites.ch](mailto:contact@turmfalkesuites.ch)

[www.turmfalkesuites.ch](http://www.turmfalkesuites.ch)

SWISS | PROPERTY



[www.turmfalkesuites.ch](http://www.turmfalkesuites.ch)