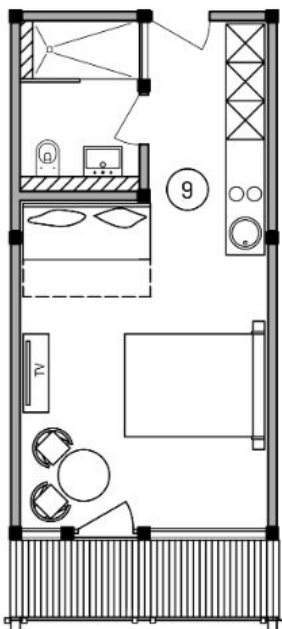


TOURMALINE
LEVEL -1 FLOORPLAN



STUDIO APARTMENTS
APARTMENT 9

Studio Apartment

Unit Numbers:

7-8-9-10-11-12-15-16-17-18-19-20

NWF Sizes ranging: 32.5 m² to 36 m²

Prices From: CHF 585'000

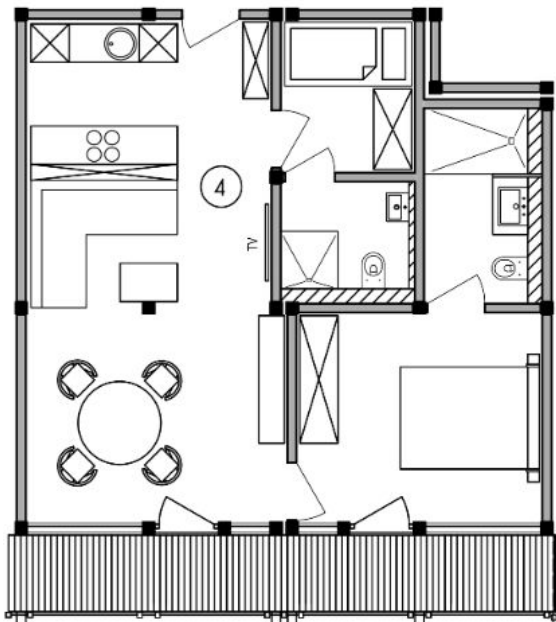
Furniture Pack: CHF 30'000

TOURMALINE RESIDENCE STUDIO APARTMENTS

Our Studio Apartments are all designed with a smart layout that caters for 2 or 4 guests. With a convenient wall bed that pulls out for your additional guests or children. Each Apartment looks out onto the majestic UNESCO World Heritage mountain landscape.

TOURMALINE LEVEL 0 FLOORPLAN

2 BEDROOM APARTMENTS APARTMENT ④



2 Bedroom Apartment

Unit Numbers: 3 – 4

NWF Size: 68 m²

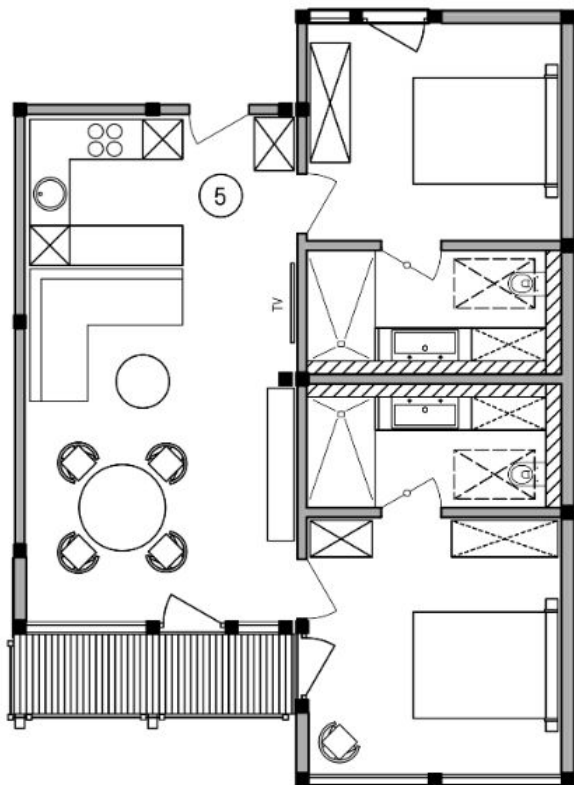
Price: CHF 1'175'000

Furniture Pack: CHF 50'000

TOURMALINE RESIDENCE 2 BEDROOM APARTMENTS

Our 2 Bedroom Apartments are available in 2 unique variants. The first layout has 2 double bedrooms both with ensuite bathrooms. The second variant has a double room and 2nd room has a bunk bed, with a shared bathroom. Each Apartment looks out onto the majestic UNESCO World Heritage mountain landscape.

TOURMALINE LEVEL 0 FLOORPLAN



2 BEDROOM APARTMENTS APARTMENT ⑤

2 Bedroom Apartment

Unit Numbers: 2-5-14-21

NWF Size: 83.5 m²

Prices from: CHF 1'345'000

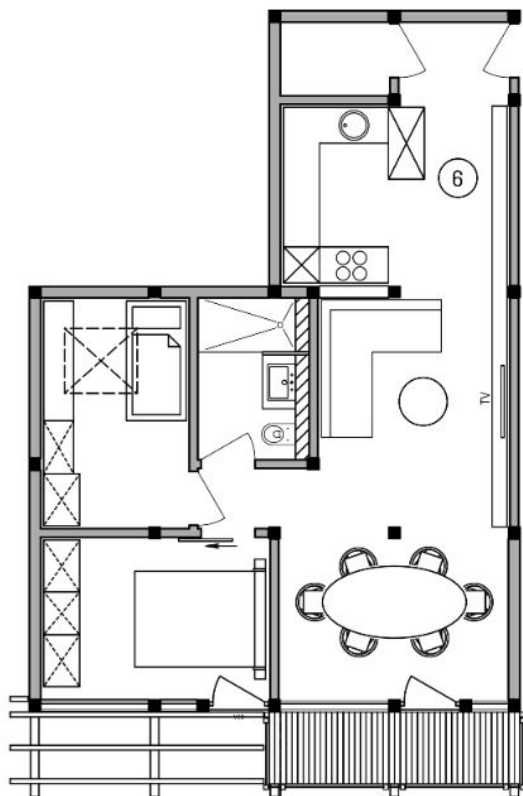
Furniture Pack: CHF 50'000

TOURMALINE RESIDENCE 2 BEDROOM APARTMENTS

Our 2 Bedroom Apartments are available in 2 unique variants. The first layout has 2 double bedrooms both with ensuite bathrooms. The second variant has a double room and 2nd room has a bunk bed, with a shared bathroom. Each Apartment looks out onto the majestic UNESCO World Heritage mountain landscape.

TOURMALINE
LEVEL -1 FLOORPLAN

2 BEDROOM APARTMENTS
APARTMENT ⑥



2 Bedroom Apartment

Unit Numbers: 6-13

NWF Size: 78 m²

Prices from: CHF 1'265'000

Furniture pack: CHF 50'000

TOURMALINE RESIDENCE 2 BEDROOM APARTMENTS

Our 2 Bedroom Apartments are available in 2 unique variants. The first layout has 2 double bedrooms both with ensuite bathrooms. The second variant has a double room and 2nd room has a bunk bed, with a shared bathroom. Each Apartment looks out onto the majestic UNESCO World Heritage mountain landscape.

TOURMALINE
LEVEL +1 FLOORPLAN

3 BEDROOM APARTMENT
APARTMENT ①

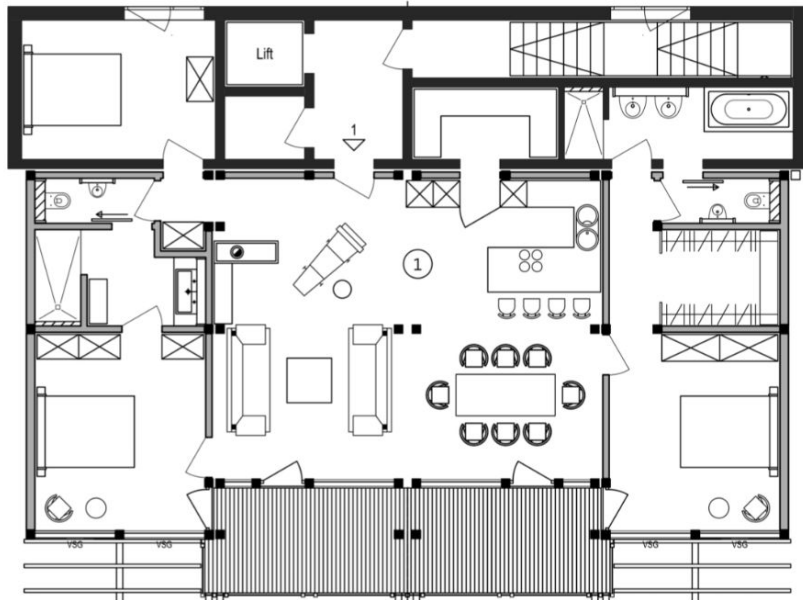
Penthouse
3 Bedroom Apartment

Unit Number: 1

NWF Size: 166 m²

Price: CHF 2'800'000

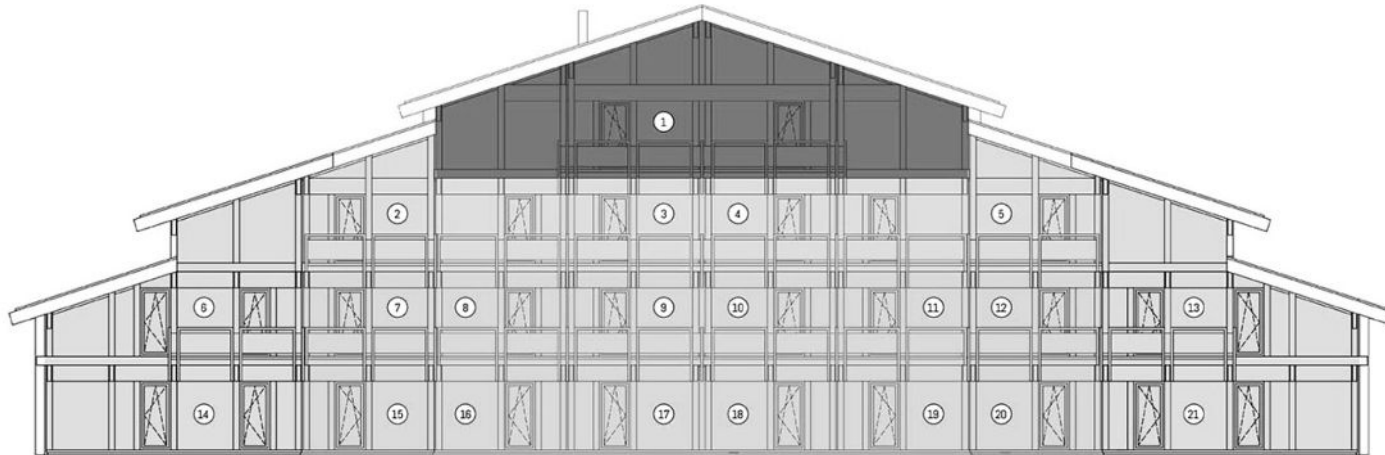
Furniture pack: CHF 100'000



TOURMALINE RESIDENCE 3 BEDROOM APARTMENTS

Our one of a kind 3 Bedroom Apartment is positioned on the top floor in the Tourmaline Building. With ample living area containing the dining, lounge and kitchen space, and a balcony with exceptional views onto the majestic UNESCO World Heritage mountain landscape.

TOURMALINE
MASTER FLOORPLAN



Master Floorplan

TOURMALINE RESIDENCE 4 LEVEL APARTMENT BLOCK

The Tourmaline, named after the precious stone, is set to be constructed and realised from 2024. This 2nd Phase of Lauchernalp Resort Residences will be constructed by world class craftsmanship, exceptional at designing Stylish Alpine Living. Each apartment has been thoughtfully planned, all with incredible views of the Swiss Alps and Lötschental valley.







II TOURMALINE

FOREVER HOME Lauchernalp, Löttschental

SWISS RESORT RESIDENCES

An Area Residence Guide to Lauchernalp FOUND WITHIN THE LÖTTSCHEN VALLEY

LEGEND
PROPERTY SITEPLAN AND AREA INFOGRAPHIC

	Amethyst Apartments Realized
	Tourmaline Apartments Permit Granted
	Clubhouse Project Permit Granted
	Lazulite Apartments To Be Permitted
	Ski School
	Private Chalets

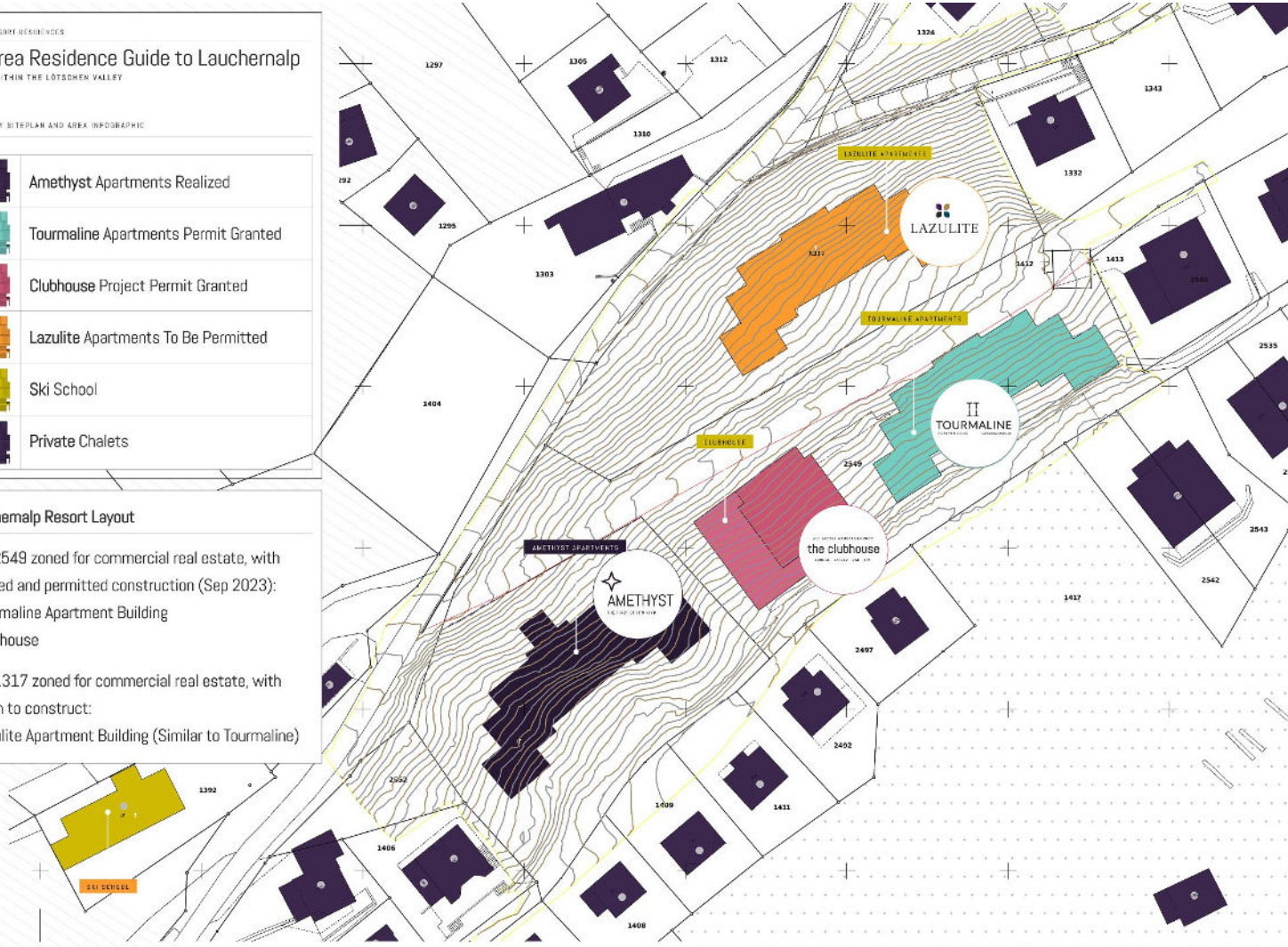
Lauchernalp Resort Layout

Plot 2549 zoned for commercial real estate, with planned and permitted construction (Sep 2023):

- Tourmaline Apartment Building
- Clubhouse

Plot 1317 zoned for commercial real estate, with option to construct:

- Lazulite Apartment Building (Similar to Tourmaline)



Area Sitemap