

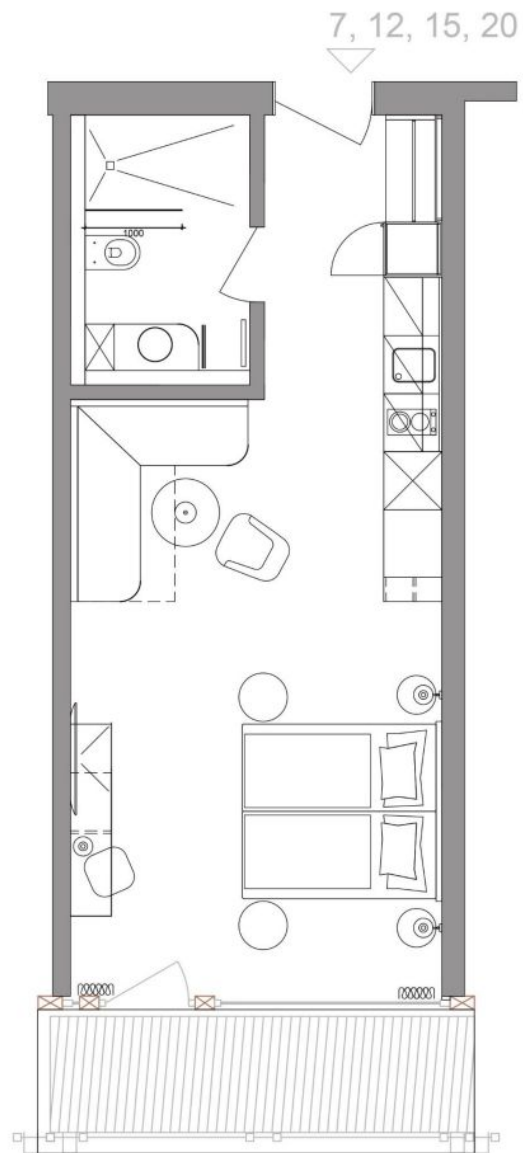
Studio Apartment

Unit Numbers: 8-11 & 16-19

NWF: 35m²

Prices From: CHF 580'000

Furniture Pack: CHF 30'000



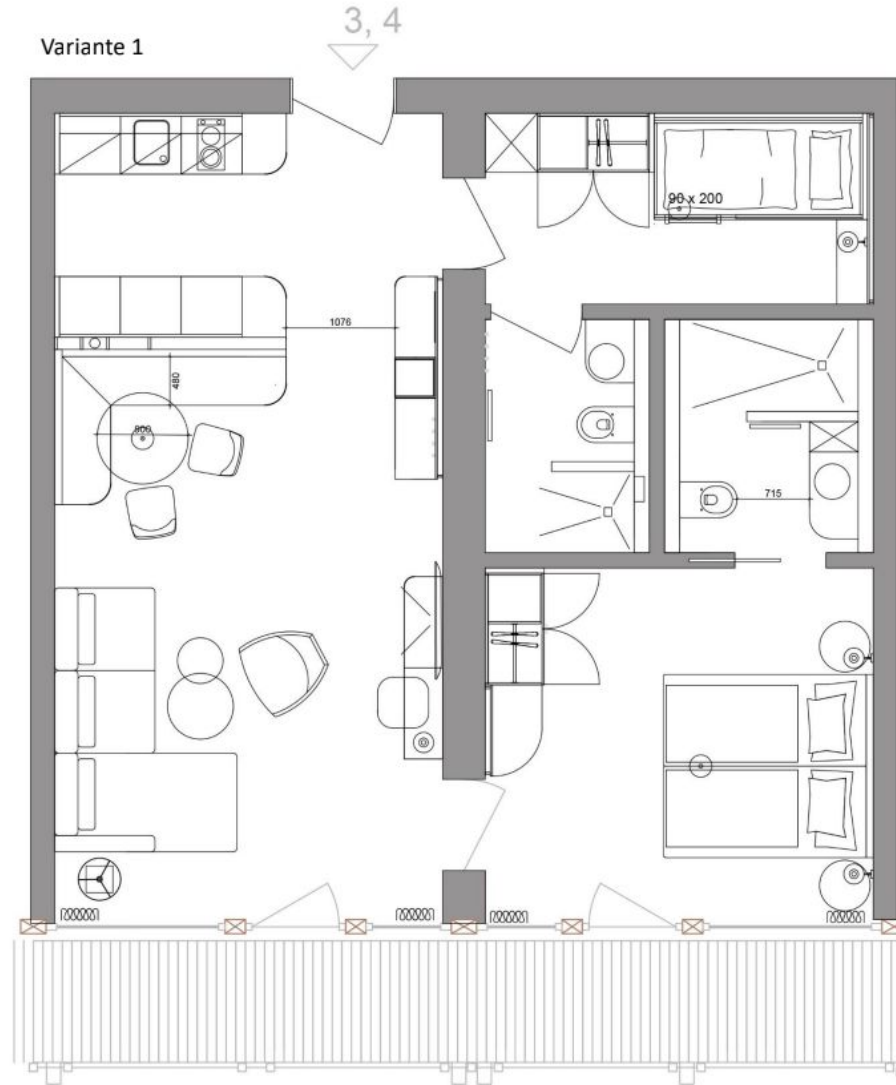
Studio Apartment

Unit Numbers: 7/12/15/20

NWF: 40m²

Prices From: CHF 595'000

Furniture Pack: CHF 30'000



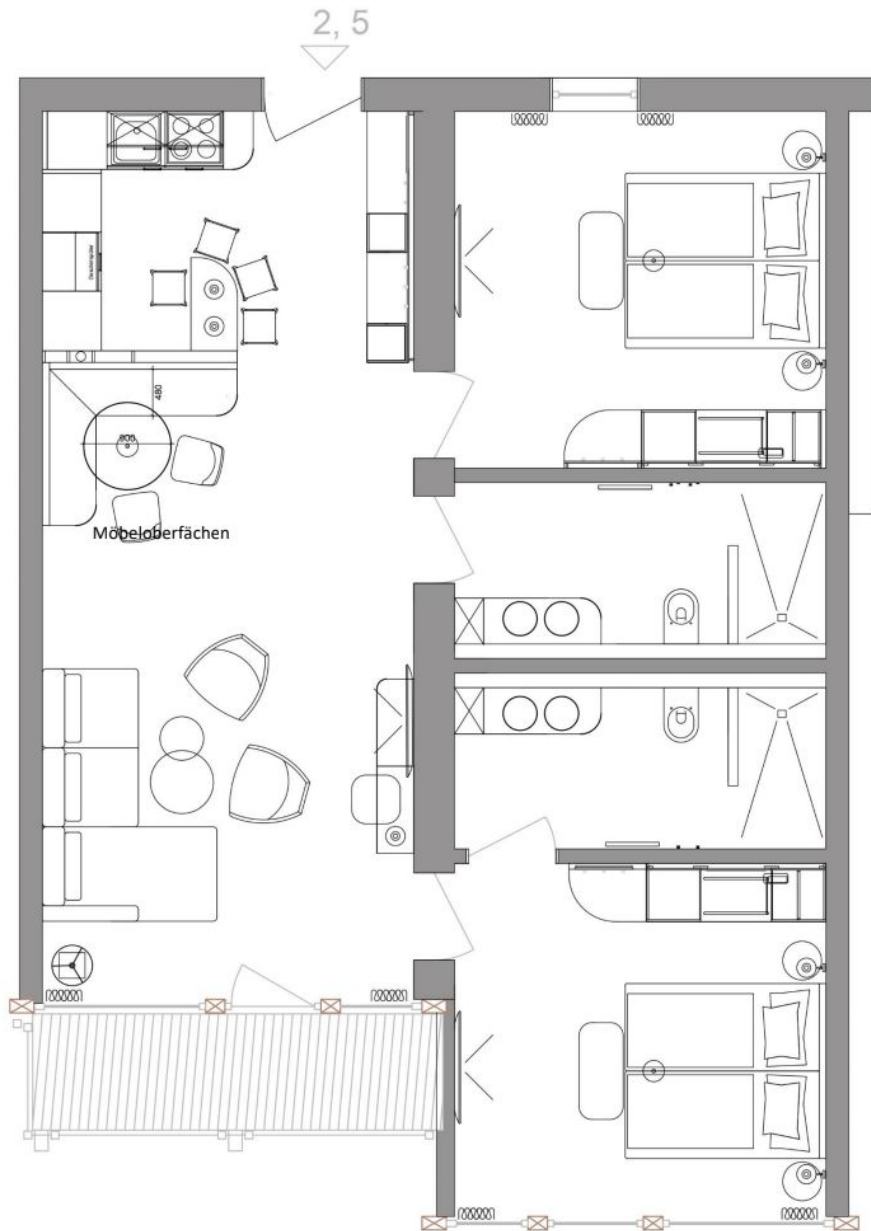
2 Bedroom Apartment

Unit Numbers: 3 – 4

NWF Size: 69 m²

Price: CHF 1'175'000

Furniture Pack: CHF 80'000



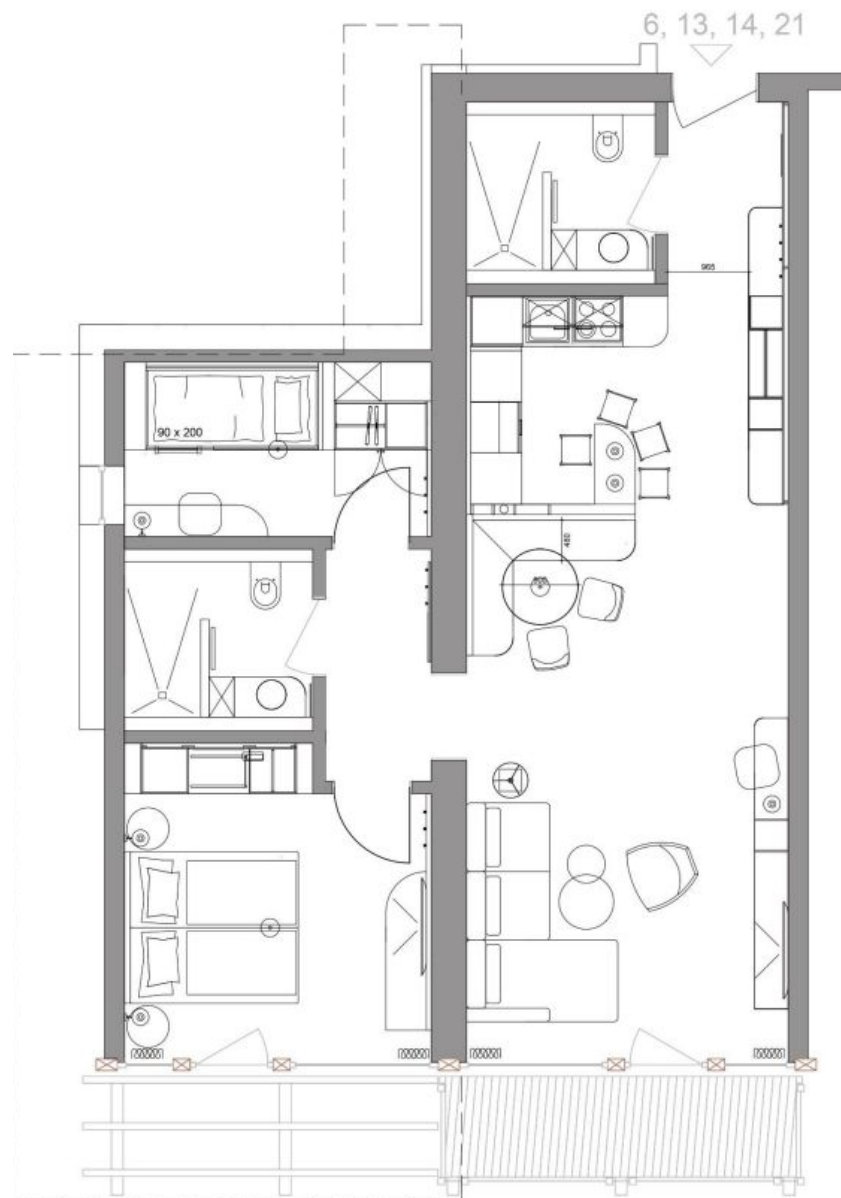
2 Bedroom Apartment

Unit Numbers: 2–5

NWF Size: 89m²

Prices from: CHF 1'365'000

Furniture Pack: CHF 80'000



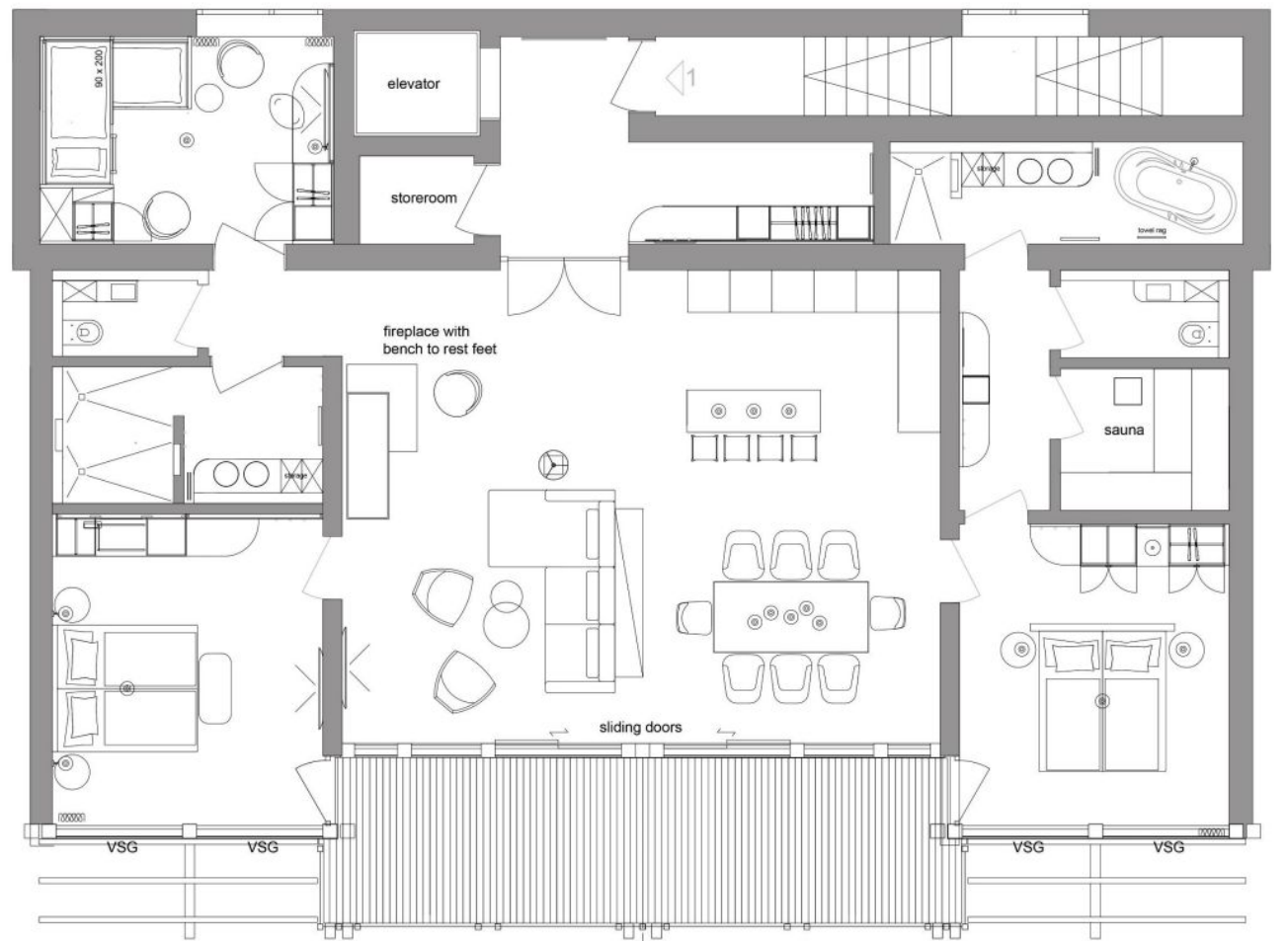
2 Bedroom Apartment

Unit Numbers: 6-13-14-21

NWF Size: 86 m²

Prices from: CHF 1'285'000

Furniture pack: CHF 80'000



Penthouse 3 Bedroom Apartment

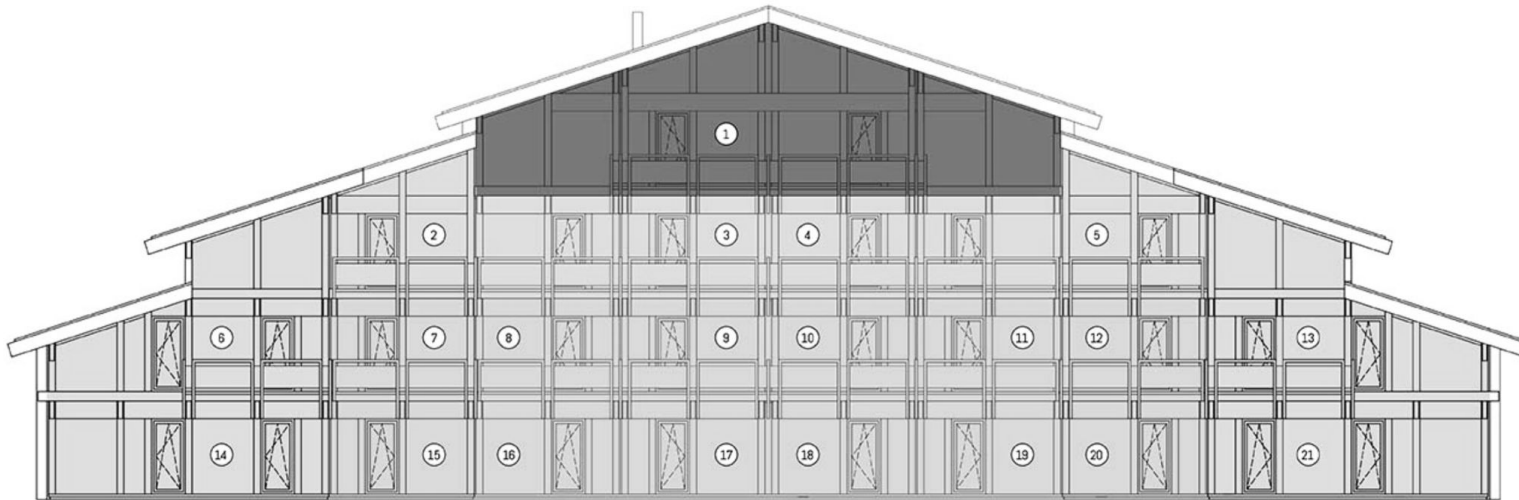
Unit Number: 1

NWF Size: 173 m²

Price: CHF 2'800'000

Furniture pack: CHF 100'000

TOURMALINE
MASTER FLOORPLAN



Master Floor Plan

TOURMALINE RESIDENCE 4 LEVEL APARTMENT BLOCK

The Tourmaline, named after the precious stone, is set to be constructed and realised from 2024. This 2nd Phase of Lauchernalp Resort Residences will be constructed by world class craftsmanship, exceptional at designing Stylish Alpine Living. Each apartment has been thoughtfully planned, all with incredible views of the Swiss Alps and Lötschental valley.

